

TAX1BP1 Polyclonal Antibody

Catalog number: 14424-1-AP

Size: 38 µg/150 µl

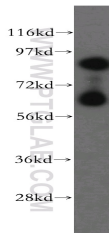
Source: Rabbit

Isotype: IgG

Synonyms:

TAX1BP1; CALCOCO3; T6BP;

TXBP151



HEK-293 cells were subjected to SDS PAGE followed by western blot with 14424-1-AP(TAX1BP1 Antibody) at dilution of 1:800

Applications

Tested applications: ELISA, WB
Species specificity: Human, mouse; other species not tested.
Positive WB detected in: HEK-293 cells, HEK-293 cells, mouse kidney tissue, mouse liver tissue, mouse lung tissue, mouse testis tissue

Calculated TAX1BP1 MW: 91kd
Observed TAX1BP1 MW: 68 kDa, 85 kDa
Recommended dilution: WB: 1:200-1:2000

Application key: WB = Western blotting, IHC = Immunohistochemistry, IF = Immunofluorescence, IP = Immunoprecipitation, FC = Flow cytometry

Immunogen information

Immunogen: Ag5789
GenBank accession number: BC050358
Gene ID (NCBI): 8887
Full name: Tax1 (human T-cell leukemia virus type I) binding protein 1

Product information

Purification method: Antigen affinity purification
Storage: PBS with 0.02% sodium azide and 50% glycerol pH 7.3. Store at -20°C.