

SEPT10 Polyclonal Antibody

Catalog number: 12420-1-AP

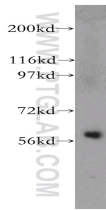
Size: 20 µg/150 µl

Source: Rabbit

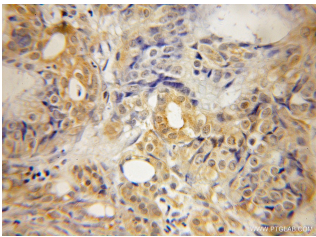
Isotype: IgG

Synonyms:

SEPT10; FLJ11619



human kidney tissue were subjected to SDS PAGE followed by western blot with 12420-1-AP(SEPT10 Antibody) at dilution of 1:800



Immunohistochemistry of paraffin-embedded human pancreas cancer using 12420-1-AP(SEPT10 Antibody) at Dilution 1:50 (under 10x lens)

Applications

Tested applications:	ELISA, WB, IHC
Species specificity:	Human, mouse, rat; other species not tested.
Positive WB detected in:	Human kidney tissue
Calculated SEPT10 MW:	53kd or 57kd
Observed SEPT10 MW:	57kd
Positive IHC detected in:	Human pancreas cancer
Recommended dilution:	WB: 1:200-1:2000 IHC: 1:20-1:200

Application key: WB = Western blotting, IHC = Immunohistochemistry, IF = Immunofluorescence, IP = Immunoprecipitation, FC = Flow cytometry

Immunogen information

Immunogen:	Ag3071
GenBank accession number:	BC020502
Gene ID (NCBI):	151011
Full name:	Septin 10

Product information

Purification method:	Antigen affinity purification
Storage:	PBS with 0.1% sodium azide and 50% glycerol pH 7.3. Store at -20°C.