

CSN1 Polyclonal Antibody

Catalog number: 11709-1-AP

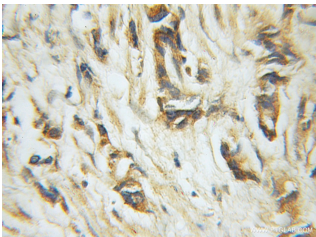
Size: 29 µg/150 µl

Source: Rabbit

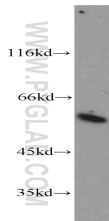
Isotype: IgG

Synonyms:

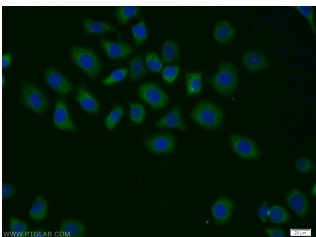
GPS1; COPS1, CSN1, G protein pathway suppressor 1, GPS 1, GPS1, Protein MFH, SGN1, Signalosome subunit 1



Immunohistochemical of paraffin-embedded human prostate cancer using 11709-1-AP (GPS1 antibody) at dilution of 1:50 (under 10x lens)



HeLa cells were subjected to SDS PAGE followed by western blot with 11709-1-AP (GPS1 antibody) at dilution of 1:500



Immunofluorescent analysis of MCF-7 cells using 11709-1-AP (GPS1 Antibody) at dilution of 1:25 and Alexa Fluor 488-conjugated AffiniPure Goat Anti-Rabbit IgG(H+L)

Applications

Tested applications:	ELISA, WB, IHC, IF
Species specificity:	Human; other species not tested.
Calculated CSN1 MW:	491aa, 56 kDa
Observed CSN1 MW:	60-70 kDa
Positive WB detected in	HeLa cells, HEK-293 cells, HT-1080 cells, K-562 cells, MCF7 cells, Raji cells
Positive IHC detected in	Human prostate cancer tissue
Positive IF detected in	MCF-7 cells
Recommended dilution:	WB: 1:500-1:5000 IHC: 1:20-1:200 IF: 1:10-1:100

Application key: WB = Western blotting, IHC = Immunohistochemistry, IF = Immunofluorescence, IP = Immunoprecipitation

Immunogen information

Immunogen:	Ag2273
GenBank accession number:	BC000155
Gene ID (NCBI):	2873
Full name:	G protein pathway suppressor 1

Product information

Purification method:	Antigen affinity purification
Storage:	PBS with 0.02% sodium azide and 50% glycerol pH 7.3. Store at -20°C.