

EEF1A1 Polyclonal Antibody

Catalog number: 11402-1-AP

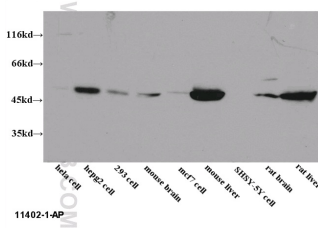
Size: 48 µg/150 µl

Source: Rabbit

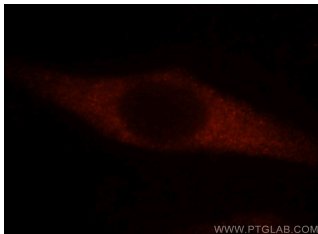
Isotype: IgG

Synonyms:

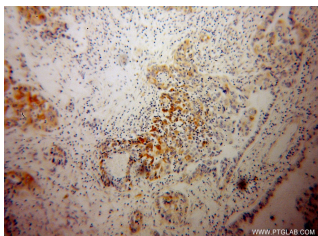
EEF1A1; CCS 3, CCS3, EEF 1, EEF1A, eEF1A 1, EEF1A1, EF 1 alpha 1, EF Tu, EF1A, Elongation factor 1 alpha 1, Elongation factor Tu, FLJ25721, GRAF 1EF, HNGC:16303, LENG7, PTI1



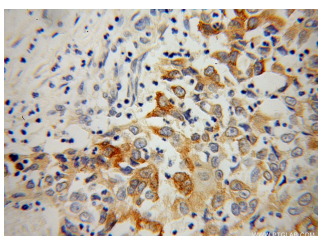
WB results of 11402-1-AP (anti-EEF1A1) in multiple cells.



Immunofluorescent analysis of HeLa cells, using EEF1A1 antibody 11402-1-AP at 1:25 dilution and Rhodamine-labeled goat anti-rabbit IgG (red).



Immunohistochemical of paraffin-embedded human pancreas cancer using 11402-1-AP (EEF1A1 antibody) at dilution of 1:100 (under 10x lens)



Background

EEF1A1, also named as EEF1A, EF1A and LENG7, belongs to the GTP-binding elongation factor family. This protein promotes the GTP-dependent binding of aminoacyl-tRNA to the A-site of ribosomes during protein biosynthesis. It is a typical housekeeping gene product required for the maintenance of cell growth and/or survival. In addition, EEF1A1 protects the aminoester bond against hydrolysis until a correct match between the codon on mRNA and the anti-codon on tRNA can be achieved. This antibody is a rabbit polyclonal antibody raised against residues near the C terminus of human EEF1A1.

Applications

Tested applications:	ELISA, WB, IHC, IF
Cited applications:	IHC, WB
Species specificity:	Human, Mouse, Rat; other species not tested.
Cited species:	Human
Calculated EEF1A1 MW:	462aa, 50 kDa
Observed EEF1A1 MW:	50 kDa
Positive WB detected in	HepG2 cells, A431 cells, HEK-293 cells, HeLa cells, human brain tissue, Jurkat cells, MCF7 cells, mouse brain tissue, mouse heart tissue, mouse liver tissue, mouse ovary tissue, mouse pancreas tissue, mouse skeletal muscle tissue, multi-cells, rat brain tissue, SH-SY5Y cells
Positive IHC detected in	Human pancreas cancer tissue
Positive IF detected in	HeLa cells
Recommended dilution:	WB: 1:500-1:5000 IHC: 1:20-1:200 IF: 1:10-1:100

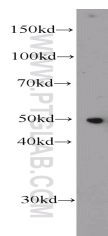
Application key: WB = Western blotting, IHC = Immunohistochemistry, IF = Immunofluorescence, IP = Immunoprecipitation

Immunogen information

Immunogen:	Ag1938
GenBank accession number:	BC014224
Gene ID (NCBI):	1915
Full name:	Eukaryotic translation elongation factor 1 alpha 1

Product information

Purification method:	Antigen affinity purification
Storage:	PBS with 0.1% sodium azide and 50% glycerol pH 7.3. Store at -20°C.



Immunohistochemical of
paraffin-embedded human
pancreas cancer using 11402-
1-AP(EEF1A1 antibody) at
dilution of 1:100 (under 40x
lens)

HepG2 cells were subjected to
SDS PAGE followed by
western blot with 11402-1-
AP(EEF1A1 antibody) at
dilution of 1:1000