

## MAGEC2 Polyclonal Antibody

Catalog number: 10280-1-AP

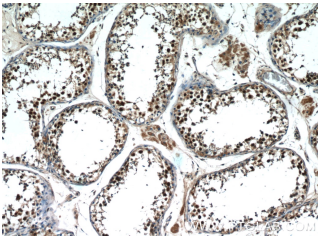
Size: 39 µg/150 µl

Source: Rabbit

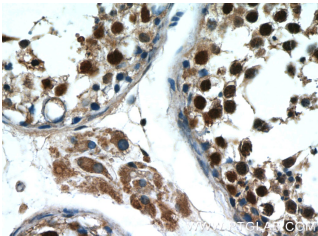
Isotype: IgG

Synonyms:

MAGEC2; Cancer/testis antigen 10, CT10, HCA587, MAGE C2 antigen, MAGE E1 antigen, MAGEC2, MAGEE1, melanoma antigen family C, 2, Melanoma associated antigen C2



Immunohistochemistry of paraffin-embedded human testis tissue slide using 10280-1-AP (MAGEC2 Antibody) at dilution of 1:50 (under 10x lens)



Immunohistochemistry of paraffin-embedded human testis tissue slide using 10280-1-AP (MAGEC2 Antibody) at dilution of 1:50 (under 40x lens)

### Background

Melanoma antigen family C, 2 (MAGEC2, synonyms: CT10, HCA587, MAGEE1, MGC13377) is related to members of the MAGEC gene family. MAGEC2 is not expressed in normal tissues, except for testis, and is expressed in tumors of various histological types. This gene and other MAGEC genes are clustered on chromosome Xq26-q27.

### Applications

Tested applications:	ELISA, IHC
Cited applications:	IHC
Species specificity:	Human; other species not tested.
Cited species:	Human
Calculated MAGEC2 MW:	373 aa, 41 kDa
Observed MAGEC2 MW:	
Positive IHC detected in	Human testis tissue, human breast cancer tissue, human liver cancer tissue
Recommended dilution:	IHC: 1:20-1:200

Application key: WB = Western blotting, IHC = Immunohistochemistry, IF = Immunofluorescence, IP = Immunoprecipitation

### Immunogen information

Immunogen:	Ag0418
GenBank accession number:	BC005891
Gene ID (NCBI):	51438
Full name:	Melanoma antigen family C, 2

### Product information

Purification method:	Antigen affinity purification
Storage:	PBS with 0.1% sodium azide and 50% glycerol pH 7.3. Store at -20°C.