

LPO Polyclonal Antibody

Catalog number: 10376-1-AP

Size: 25 µg/150 µl

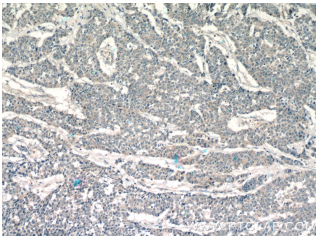
Source: Rabbit

Isotype: IgG

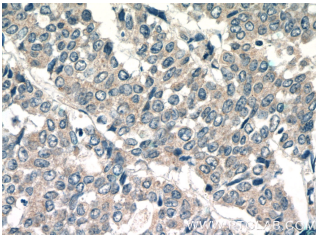
Synonyms:

LPO; lactoperoxidase, LPO,

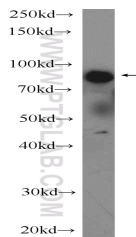
Salivary peroxidase, SAPX, SPO



Immunohistochemistry of paraffin-embedded human colon cancer tissue slide using 10376-1-AP (LPO Antibody) at dilution of 1:50 (under 10x lens)



Immunohistochemistry of paraffin-embedded human colon cancer tissue slide using 10376-1-AP (LPO Antibody) at dilution of 1:50 (under 40x lens)



human saliva tissue were subjected to SDS PAGE followed by western blot with 10376-1-AP (LPO Antibody) at dilution of 1:1000

Applications

Tested applications:	ELISA, WB, IHC
Species specificity:	Human, Mouse; other species not tested.
Calculated LPO MW:	80 kDa
Observed LPO MW:	80 kDa
Positive WB detected in	Human saliva tissue, K-562 cells
Positive IHC detected in	Human colon cancer tissue, human breast cancer tissue
Recommended dilution:	WB: 1:500-1:5000 IHC: 1:20-1:200

Application key: WB = Western blotting, IHC = Immunohistochemistry, IF = Immunofluorescence, IP = Immunoprecipitation

Immunogen information

Immunogen:	Peptide
GenBank accession number:	BC107167
Gene ID (NCBI):	4025
Full name:	Lactoperoxidase

Product information

Purification method:	Antigen affinity purification
Storage:	PBS with 0.1% sodium azide and 50% glycerol pH 7.3. Store at -20°C.