

HSFY1 Polyclonal Antibody

Catalog number: 11970-1-AP

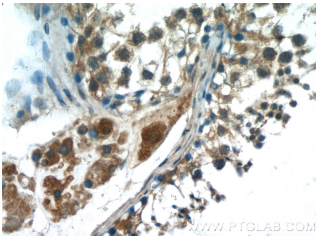
Size: 33 µg/150 µl

Source: Rabbit

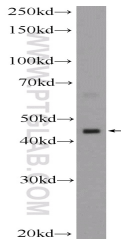
Isotype: IgG

Synonyms:

HSFY1; HSF2 like, HSF2L, HSFY,
HSFY1, HSFY2



Immunohistochemistry of paraffin-embedded human testis tissue slide using 11970-1-AP (HSFY1 Antibody) at dilution of 1:50 (under 40x lens)



human testis tissue were subjected to SDS PAGE followed by western blot with 11970-1-AP (HSFY1 Antibody) at dilution of 1:1000

Background

The HSFY gene is located in the male-specific region of chromosome Y (MSY), which is not involved in X-Y crossover events. HSFY gene is expressed exclusively in testis. HSFY is a DNA-binding protein that specifically binds heat shock promoter elements(HSE), and suggested to be implicated in spermatogenesis both in animals and humans.

Applications

Tested applications:	ELISA, IHC, WB
Species specificity:	Human; other species not tested.
Calculated HSFY1 MW:	401aa,45 kDa
Observed HSFY1 MW:	45 kDa
Positive WB detected in	Human testis tissue
Positive IHC detected in	Human testis tissue
Recommended dilution:	WB: 1:500-1:5000 IHC: 1:20-1:200

Application key: WB = Western blotting, IHC = Immunohistochemistry, IF = Immunofluorescence, IP = Immunoprecipitation

Immunogen information

Immunogen:	Ag2592
GenBank accession number:	BC055414
Gene ID (NCBI):	86614
Full name:	Heat shock transcription factor, Y-linked 1

Product information

Purification method:	Antigen affinity purification
Storage:	PBS with 0.1% sodium azide and 50% glycerol pH 7.3. Store at -20°C.