

## GNB1 Polyclonal Antibody

Catalog number: 10247-2-AP

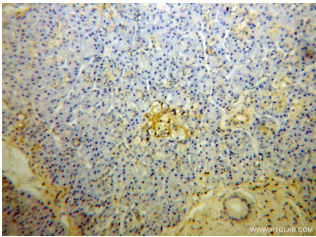
Size: 53 µg/150 µl

Source: Rabbit

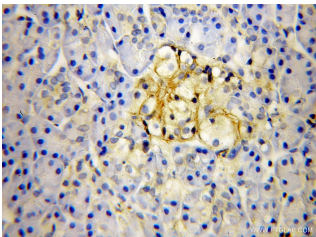
Isotype: IgG

Synonyms:

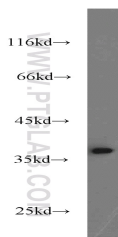
GNB1; GNB1, Transducin beta chain 1



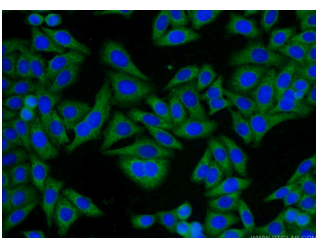
Immunohistochemical of paraffin-embedded human pancreas cancer using 10247-2-AP (GNB1 antibody) at dilution of 1:100 (under 10x lens)



Immunohistochemical of paraffin-embedded human pancreas cancer using 10247-2-AP (GNB1 antibody) at dilution of 1:100 (under 40x lens)



Jurkat cells were subjected to SDS PAGE followed by western blot with 10247-2-AP (GNB1 antibody) at dilution of 1:2000



Immunofluorescent analysis of HepG2 cells using 10247-2-AP (GNB1 Antibody) at

### Background

GNB1(Guanine nucleotide-binding protein G(I)/G(S)/G(T) subunit beta-1) belongs to the WD repeat G protein beta family. The guanine nucleotide-binding proteins (G proteins) are involved as a modulator or transducer in various transmembrane signaling systems and the beta and gamma chains are required for the GTPase activity, for replacement of GDP by GTP, and for G protein-effector interaction. GNB1 can form dimers with all gamma subunits analyzed (PMID:12782285).

### Applications

Tested applications:	ELISA, WB, IHC, IF
Cited applications:	IHC, WB
Species specificity:	Human, Mouse, Rat; other species not tested.
Cited species:	Mouse
Calculated GNB1 MW:	37 kDa
Observed GNB1 MW:	37 kDa
Positive WB detected in	Jurkat cells, HeLa cells, mouse brain tissue
Positive IHC detected in	Human pancreas cancer tissue, human gliomas tissue
Positive IF detected in	HepG2 cells
Recommended dilution:	WB: 1:1000-1:10000
	IHC: 1:20-1:200
	IF: 1:20-1:200

Application key: WB = Western blotting, IHC = Immunohistochemistry, IF = Immunofluorescence, IP = Immunoprecipitation

### Immunogen information

Immunogen:	Ag0313
GenBank accession number:	BC004186
Gene ID (NCBI):	2782
Full name:	Guanine nucleotide binding protein (G protein), beta polypeptide 1

### Product information

Purification method:	Antigen affinity purification
Storage:	PBS with 0.1% sodium azide and 50% glycerol pH 7.3. Store at -20°C.

dilution of 1:50 and Alexa  
Fluor 488-conjugated  
AffiniPure Goat Anti-Rabbit  
IgG(H+L)