

## MTRF1 Polyclonal Antibody

Catalog number: 11581-1-AP

Size: 22 µg/150 µl

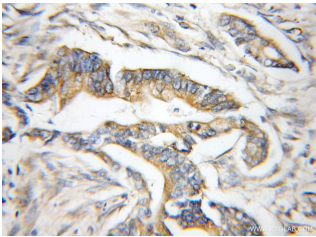
Source: Rabbit

Isotype: IgG

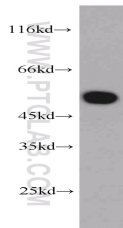
Synonyms:

MTRF1; MRF 1, MRF1, MtRF 1,

MTRF1, MTTRF1, RF1



Immunohistochemical of paraffin-embedded human pancreas cancer using 11581-1-AP (MTRF1 antibody) at dilution of 1:50 (under 10x lens)



mouse liver tissue were subjected to SDS PAGE followed by western blot with 11581-1-AP (MTRF1 antibody) at dilution of 1:300

### Applications

Tested applications:	ELISA, WB, IHC
Species specificity:	Human, Mouse; other species not tested.
Calculated MTRF1 MW:	445aa, 52 kDa
Observed MTRF1 MW:	52kd
Positive WB detected in	Mouse liver tissue
Positive IHC detected in	Human pancreas cancer tissue, human liver tissue, human pancreas tissue
Recommended dilution:	WB: 1:500-1:5000 IHC: 1:20-1:200

Application key: WB = Western blotting, IHC = Immunohistochemistry, IF = Immunofluorescence, IP = Immunoprecipitation

### Immunogen information

Immunogen:	Ag2170
GenBank accession number:	BC027731
Gene ID (NCBI):	9617
Full name:	Mitochondrial translational release factor 1

### Product information

Purification method:	Antigen affinity purification
Storage:	PBS with 0.02% sodium azide and 50% glycerol pH 7.3. Store at -20°C.