

Sam68 Polyclonal Antibody

Catalog number: 10222-1-AP

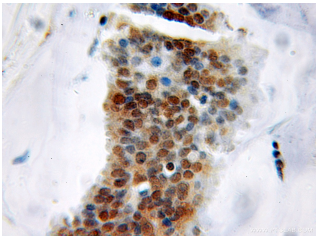
Size: 20 µg/150 µl

Source: Rabbit

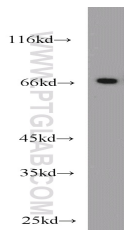
Isotype: IgG

Synonyms:

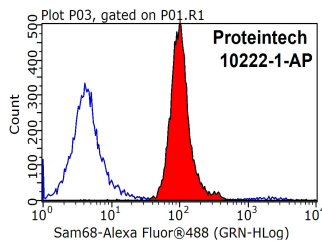
KHDRBS1; FLJ34027, KHDRBS1, p62, p68, Sam68



Immunohistochemical of paraffin-embedded human breast cancer using 10222-1-AP(KHDRBS1 antibody) at dilution of 1:50 (under 10x lens)



HeLa cells were subjected to SDS PAGE followed by western blot with 10222-1-AP(KHDRBS1 antibody) at dilution of 1:1000



1X10⁶ MCF-7 cells were stained with 0.2µg Sam68 antibody (10222-1-AP, red) and control antibody (blue). Fixed with 90% MeOH blocked with 3% BSA (30 min). Alexa Fluor 488-conjugated AffiniPure Goat Anti-Rabbit IgG(H+L) with dilution 1:1000.

Background

KHDRBS1, also named as SAM68, p62 and p68, belongs to the KHDRBS family. It is recruited and tyrosine phosphorylated by several receptor systems, for example the T-cell, leptin and insulin receptors. Once phosphorylated, KHDRBS1 functions as an adapter protein in signal transduction cascades by binding to SH2 and SH3 domain-containing proteins. It represses CBP-dependent transcriptional activation apparently by competing with other nuclear factors for binding to CBP. KHDRBS1 also acts as a putative regulator of mRNA stability and/or translation rates and mediates mRNA nuclear export. KHDRBS1 has three isoforms with calculated MW of 44-48kd. For isoform with a calculated MW of 48.2 kD, it migrated as a 68kd protein on SDS-PAGE gels[PMID: 10564820]. This is a rabbit polyclonal antibody raised against residues near the N terminus of human KHDRBS1.

Applications

Tested applications:	ELISA, WB, IHC, FC, IP
Cited applications:	IHC
Species specificity:	Human, Mouse, Rat; other species not tested.
Cited species:	Human
Calculated Sam68 MW:	48 kDa
Observed Sam68 MW:	68 kDa
Positive WB detected in	HeLa cells, HEK-293 cells, mouse brain tissue, NIH/3T3 cells
Positive IP detected in	HeLa cells
Positive IHC detected in	Human breast cancer tissue
Positive FC detected in	MCF-7 cells
Recommended dilution:	WB: 1:500-1:5000 IP: 1:500-1:5000 IHC: 1:20-1:200 FC: N/A

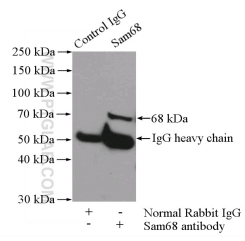
Application key: WB = Western blotting, IHC = Immunohistochemistry, IF = Immunofluorescence, IP = Immunoprecipitation

Immunogen information

Immunogen:	Ag0235
GenBank accession number:	BC000717
Gene ID (NCBI):	10657
Full name:	KH domain containing, RNA binding, signal transduction associated 1

Product information

Purification method:	Antigen affinity purification
Storage:	PBS with 0.1% sodium azide and 50% glycerol pH 7.3. Store at -20°C.



IP Result of anti-Sam68
(IP:10222-1-AP, 4ug;
Detection:10222-1-AP 1:1000)
with HeLa cells lysate 1200ug.