

MAP4K5 Polyclonal Antibody

Catalog number: 12827-1-AP

Size: 39 µg/150 µl

Source: Rabbit

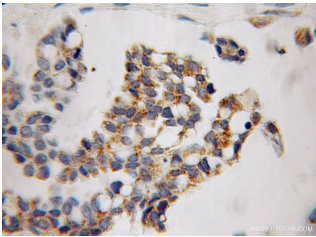
Isotype: IgG

Synonyms:

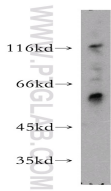
MAP4K5; GCKR, KHS, KHS1,

MAP4K5, MAPKKKK5, MEK

kinase kinase 5, MEKKK 5



Immunohistochemical of paraffin-embedded human ovary tumor using 12827-1-AP (MAP4K5 antibody) at dilution of 1:100 (under 10x lens)



mouse ovary tissue were subjected to SDS PAGE followed by western blot with 12827-1-AP (MAP4K5 antibody) at dilution of 1:1000

Applications

Tested applications:	ELISA, WB, IHC
Species specificity:	Human, Mouse, Rat; other species not tested.
Calculated MAP4K5 MW:	846aa, 95 kDa
Observed MAP4K5 MW:	58 kDa, 95 kDa, 120 kDa
Positive WB detected in	Mouse ovary tissue, HeLa cells, K-562 cells, RAW 264.7 cells
Positive IHC detected in	Human ovary tumor tissue
Recommended dilution:	WB: 1:500-1:5000 IHC: 1:20-1:200

Application key: WB = Western blotting, IHC = Immunohistochemistry, IF = Immunofluorescence, IP = Immunoprecipitation

Immunogen information

Immunogen:	Ag3547
GenBank accession number:	BC036013
Gene ID (NCBI):	11183
Full name:	Mitogen-activated protein kinase kinase kinase kinase 5

Product information

Purification method:	Antigen affinity purification
Storage:	PBS with 0.02% sodium azide and 50% glycerol pH 7.3. Store at -20°C.