

GLUD1 Polyclonal Antibody

Catalog number: 14299-1-AP

Size: 21 µg/150 µl

Source: Rabbit

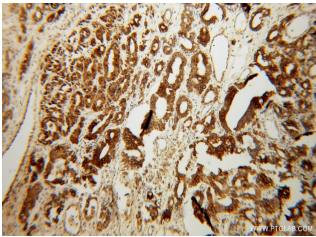
Isotype: IgG

Synonyms:

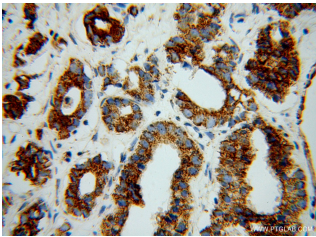
GLUD1; GDH, GDH 1, GDH1,

GLUD, GLUD1, glutamate

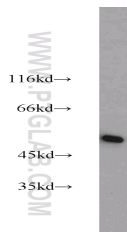
dehydrogenase 1



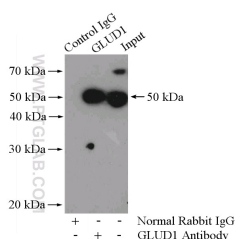
Immunohistochemical of paraffin-embedded human gliomas using 14299-1-AP (GLUD1 antibody) at dilution of 1:100 (under 10x lens)



Immunohistochemical of paraffin-embedded human gliomas using 14299-1-AP (GLUD1 antibody) at dilution of 1:100 (under 40x lens)



HeLa cells were subjected to SDS PAGE followed by western blot with 14299-1-AP (GLUD1 antibody) at dilution of 1:3000



IP Result of anti-GLUD1

(IP:14299-1-AP, 4µg;

Background

Human glutamate dehydrogenase (GDH), an enzyme central to the metabolism of glutamate, is known to exist in housekeeping and nerve tissue-specific isoforms encoded by the GLUD1 and GLUD2 genes, respectively. It catalyses the reversible inter-conversion of glutamate to alpha-ketoglutarate and ammonia, thus interconnecting amino acid and carbohydrate metabolism. GLUD1 might contribute to the formation of specific synapses in the hippocampus such as those formed by the projecting neurons of the entorhinal cortex (PMID: 22138648).

Applications

Tested applications:	ELISA, WB, IHC, IP
Species specificity:	Human, Mouse, Rat; other species not tested.
Calculated GLUD1 MW:	61 kDa
Observed GLUD1 MW:	45-55 kDa
Positive WB detected in	HeLa cells, HepG2 cells, mouse liver tissue, mouse lung tissue, PC-3 cells
Positive IP detected in	HeLa cells
Positive IHC detected in	Human gliomas tissue
Recommended dilution:	WB: 1:1000-1:10000 IP: 1:500-1:5000 IHC: 1:20-1:200

Application key: WB = Western blotting, IHC = Immunohistochemistry, IF = Immunofluorescence, IP = Immunoprecipitation

Immunogen information

Immunogen:	Ag5694
GenBank accession number:	BC040132
Gene ID (NCBI):	2746
Full name:	Glutamate dehydrogenase 1

Product information

Purification method:	Antigen affinity purification
Storage:	PBS with 0.02% sodium azide and 50% glycerol pH 7.3. Store at -20°C.

Detection:14299-1-AP 1:1000)
with HeLa cells lysate 2000ug.