

PPFIBP1 Polyclonal Antibody

Catalog number: 13961-1-AP

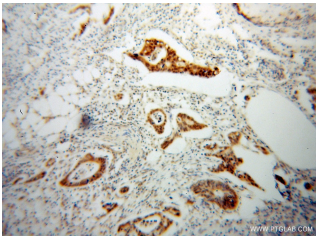
Size: 27 µg/150 µl

Source: Rabbit

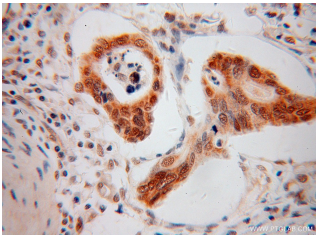
Isotype: IgG

Synonyms:

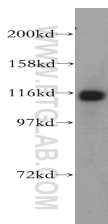
PPFIBP1; hSGT2, hSgt2p,
KIAA1230, L2, Liprin beta 1,
PPFIBP1



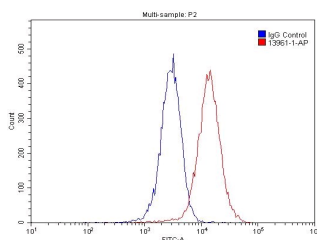
Immunohistochemical of paraffin-embedded human colon cancer using 13961-1-AP (PPFIBP1 antibody) at dilution of 1:100 (under 10x lens)



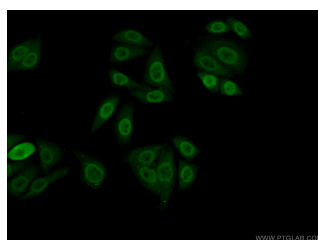
Immunohistochemical of paraffin-embedded human colon cancer using 13961-1-AP (PPFIBP1 antibody) at dilution of 1:100 (under 40x lens)



HepG2 cells were subjected to SDS PAGE followed by western blot with 13961-1-AP (PPFIBP1 antibody) at dilution of 1:1000



1X10⁶ HepG2 cells were stained with .2µg PPFIBP1



Immunofluorescent analysis of (-20 Ethanol) fixed

Applications	
Tested applications:	ELISA, WB, IHC, IP, IF, FC
Species specificity:	Human, Mouse, Rat; other species not tested.
Calculated PPFIBP1 MW:	1011aa, 114 kDa
Observed PPFIBP1 MW:	114 kDa
Positive WB detected in	HepG2 cells, DU 145 cells
Positive IP detected in	HepG2 cells
Positive IHC detected in	Human colon cancer tissue
Positive IF detected in	HepG2 cells
Positive FC detected in	HepG2 cells
Recommended dilution:	WB: 1:200-1:2000 IP: 1:200-1:2000 IHC: 1:20-1:200 IF: 1:50-1:500 FC: N/A

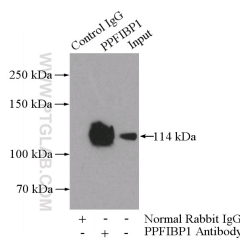
Application key: WB = Western blotting, IHC = Immunohistochemistry, IF = Immunofluorescence, IP = Immunoprecipitation

Immunogen information

Immunogen:	Ag4884
GenBank accession number:	BC050281
Gene ID (NCBI):	8496
Full name:	PTPRF interacting protein, binding protein 1 (liprin beta 1)

Product information

Purification method:	Antigen affinity purification
Storage:	PBS with 0.02% sodium azide and 50% glycerol pH 7.3. Store at -20°C.



IP Result of anti-PPFIBP1 (IP:13961-1-AP, 4µg;

antibody (13961-1-AP, red)
and control antibody (blue).
Fixed with 4% PFA blocked
with 3% BSA (30 min). Alexa
Fluor 488-conjugated
AffiniPure Goat Anti-Rabbit
IgG(H+L) with dilution 1:1500.

HepG2 cells using 13961-1-
AP (PPFIBP1 Antibody) at
dilution of 1:50 and Alexa
Fluor 488-conjugated
AffiniPure Goat Anti-Rabbit
IgG(H+L)

Detection:13961-1-AP 1:500)
with HepG2 cells lysate
2400ug.