

WSB1 Polyclonal Antibody

Catalog number: 11666-1-AP

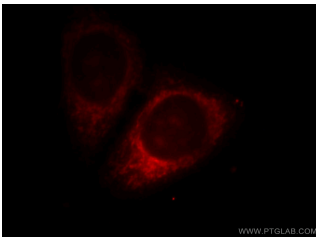
Size: 56 µg/150 µl

Source: Rabbit

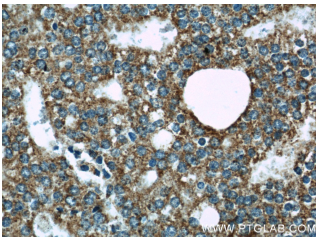
Isotype: IgG

Synonyms:

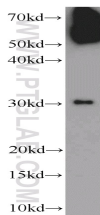
WSB1; SWIP1, WSB 1, WSB1



Immunofluorescent analysis of HepG2 cells, using WSB1 antibody 11666-1-AP at 1:25 dilution and Rhodamine-labeled goat anti-rabbit IgG (red).



Immunohistochemical of paraffin-embedded human prostate cancer using 11666-1-AP (WSB1 antibody) at dilution of 1:50 (under 40x lens)



SGC-7901 cells were subjected to SDS PAGE followed by western blot with 11666-1-AP (WSB1 antibody) at dilution of 1:1000

Background

WSB1 (or SWIP1) gene encodes WD repeat and SOCS box-containing protein 1, a member of the WD-protein subfamily. It contains several WD-repeats spanning most of the protein and an SOCS box in the C-terminus. Alternatively spliced transcript variants encoding 3 distinct isoforms have been found for this gene. WSB1 serves as a probable substrate-recognition component of a SCF-like ECS (Elongin-Cullin-SOCS-box protein) E3 ubiquitin ligase complex which mediates the ubiquitination and subsequent proteasomal degradation of target proteins. Ubiquitination and degradation of homeodomain-interacting protein kinase 2 by WSB1 has been reported (PMID: 15965468), initiated by the interaction of the two components (PMID: 18093972). WSB1 is also a part of an E3 ubiquitin ligase for the thyroid-hormone-activating type 2 iodothyronine deiodinase (D2) (PMID: 15965468).

Applications

Tested applications:	ELISA, WB, IF, IHC
Species specificity:	Human; other species not tested.
Calculated WSB1 MW:	421aa, 47 kDa
Observed WSB1 MW:	56 kDa
Positive WB detected in	SGC-7901 cells, A549 cells, COLO 320 cells
Positive IHC detected in	Human prostate cancer tissue, human breast cancer tissue
Positive IF detected in	HepG2 cells
Recommended dilution:	WB: 1:500-1:5000 IHC: 1:20-1:200 IF: 1:10-1:100

Application key: WB = Western blotting, IHC = Immunohistochemistry, IF = Immunofluorescence, IP = Immunoprecipitation

Immunogen information

Immunogen:	Ag2211
GenBank accession number:	BC021110
Gene ID (NCBI):	26118
Full name:	WD repeat and SOCS box-containing 1

Product information

Purification method:	Antigen affinity purification
Storage:	PBS with 0.1% sodium azide and 50% glycerol pH 7.3. Store at -20°C.