

## KIF3A Polyclonal Antibody

Catalog number: 13930-1-AP

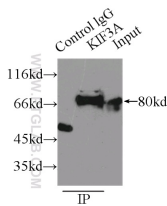
Size: 20 µg/150 µl

Source: Rabbit

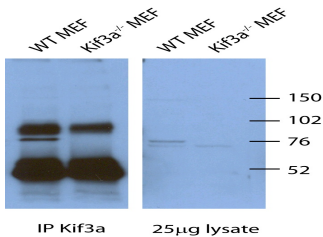
Isotype: IgG

Synonyms:

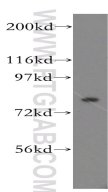
KIF3A; KIF3, KIF3A, kinesin family member 3A, Kinesin like protein KIF3A



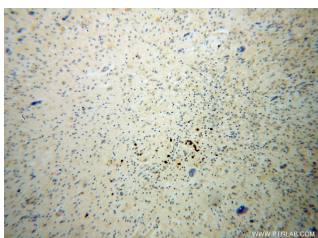
IP Result of anti-KIF3A (IP:13930-1-AP, 4µg; Detection:13930-1-AP 1:500) with mouse brain tissue lysate 8000µg.



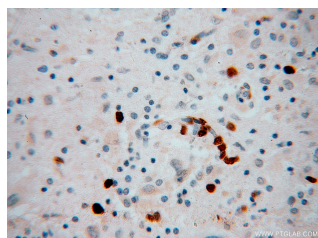
WB and IP result of the antibody anti-KIF3A (13930-1-AP) in mouse cell from Corbit, Kevin.



human cerebellum tissue were subjected to SDS PAGE followed by western blot with 13930-1-AP(KIF3A antibody) at dilution of 1:500



Immunohistochemical of paraffin-embedded human gliomas using 13930-1-



Immunohistochemical of paraffin-embedded human gliomas using 13930-1-

### Background

KIF3A is a subunit of Kinesin II that is essential for intraflagellar transport (IFT). It functions as the anterograde motor to deliver ciliary components to the tip where the axoneme is assembled. Disruption of KIF3A has been reported to block mammalian ciliogenesis. Recently KIF3A has been found to localize to the mother centriole and is required for centrioles organization. This antibody specifically recognizes the endogenous KIF3A protein in mouse embryonic fibroblasts (MEFs) but not in KIF3A<sup>-/-</sup> lysate. (23386061)

### Applications

Tested applications:	ELISA, WB, IHC, IP
Cited applications:	IF, WB
Species specificity:	Human, Mouse; other species not tested.
Cited species:	Human, mouse
Calculated KIF3A MW:	80 kDa
Observed KIF3A MW:	80kd
Positive WB detected in	Human cerebellum tissue, mouse brain tissue, mouse cerebellum tissue
Positive IP detected in	Mouse brain tissue
Positive IHC detected in	Human gliomas tissue
Recommended dilution:	WB: 1:200-1:2000 IP: 1:200-1:2000 IHC: 1:20-1:200

Application key: WB = Western blotting, IHC = Immunohistochemistry, IF = Immunofluorescence, IP = Immunoprecipitation

### Immunogen information

Immunogen:	Ag4954
GenBank accession number:	BC045542
Gene ID (NCBI):	11127
Full name:	Kinesin family member 3A

### Product information

Purification method:	Antigen affinity purification
Storage:	PBS with 0.02% sodium azide and 50% glycerol pH 7.3. Store at -20°C.

**AP(KIF3A antibody) at  
dilution of 1:100 (under 10x  
lens)**

**AP(KIF3A antibody) at  
dilution of 1:100 (under 40x  
lens)**