

## MESDC2 Polyclonal Antibody

Catalog number: 10958-1-AP

Size: 20 µg/150 µl

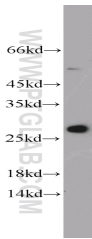
Source: Rabbit

Isotype: IgG

Synonyms:

MESDC2; BOCA; KIAA0081;

MESD



HEK-293 cells were subjected to SDS PAGE followed by western blot with 10958-1-AP (MESDC2 Antibody) at dilution of 1:600

### Applications

Tested applications:	ELISA, WB
Species specificity:	Human; other species not tested.
Positive WB detected in:	HEK-293 cells
Calculated MESDC2 MW:	26kd
Observed MESDC2 MW:	26-28 kDa
Recommended dilution:	WB: 1:200-1:2000

Application key: WB = Western blotting, IHC = Immunohistochemistry, IF = Immunofluorescence, IP = Immunoprecipitation, FC = Flow cytometry

### Immunogen information

Immunogen:	Ag1403
GenBank accession number:	BC009210
Gene ID (NCBI):	23184
Full name:	Mesoderm development candidate 2

### Product information

Purification method:	Antigen affinity purification
Storage:	PBS with 0.1% sodium azide and 50% glycerol pH 7.3. Store at -20°C.