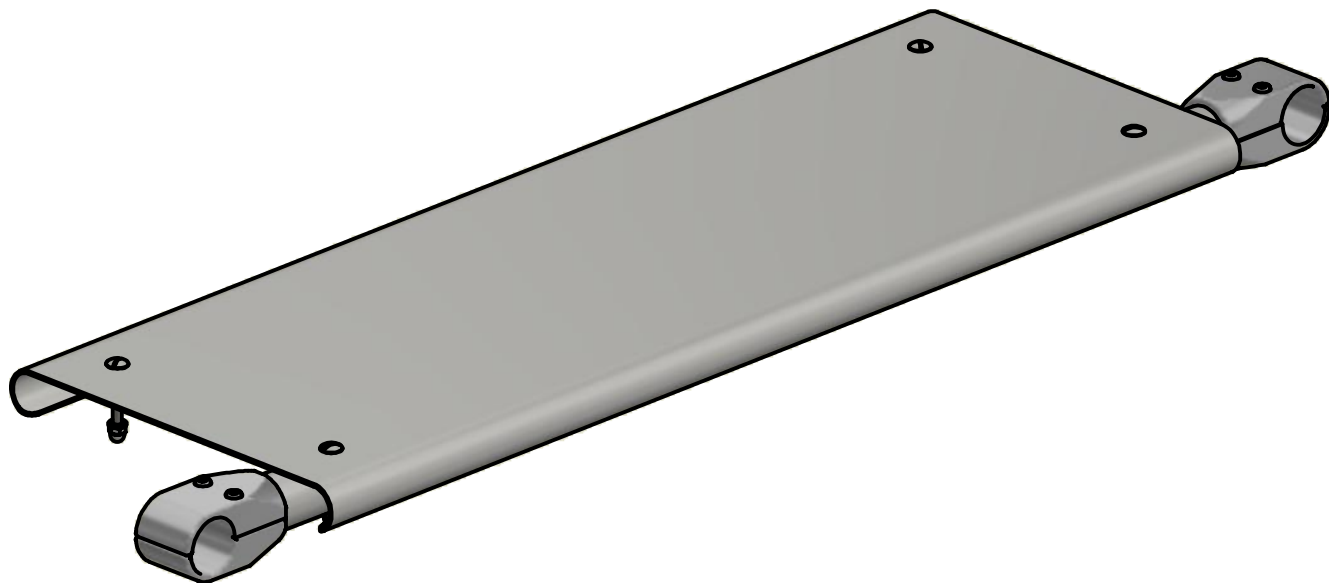
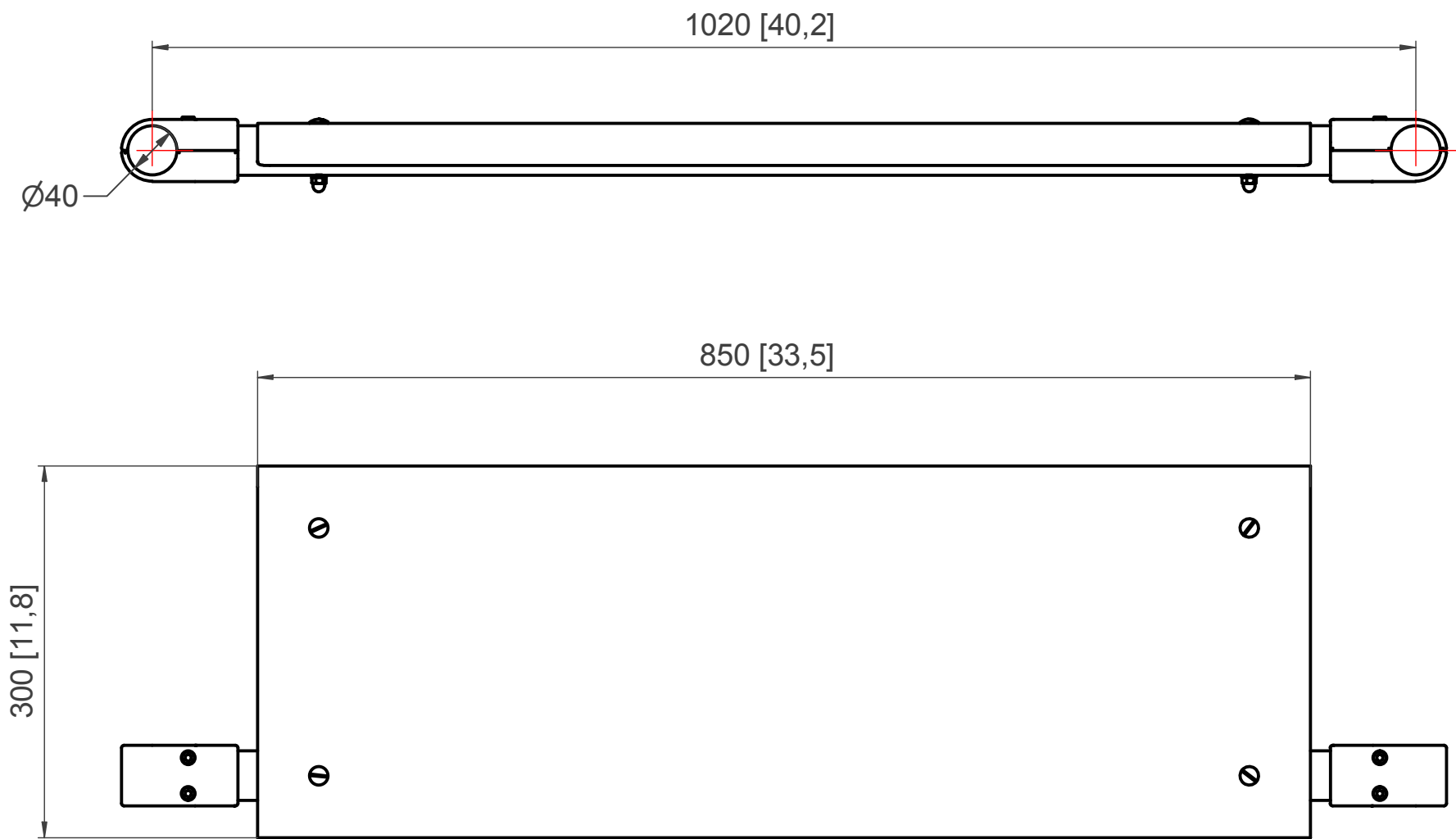




Fabrication materials: Stainless Steel 304L with electro-polished finish & Aluminium anodized connectors



Estimation total weight  7 kg	VARIATION IN DIMENSIONS WITHOUT TOLERANCE IND. DIN 7168			PalbamClass  EN HAROD IHUD	EUROPE PROJ   	
	BREAK EDGES  0.3x45		STATUS			
	MEDIUM					
ALL RIGHTS STRICTLY RESERVED USE, REPRODUCTION OR ISSUE TO THIRD PARTY IN ANY FORM WHATEVER IS NOT PERMITTED UNLESS AUTHORIZED IN WRITING BY THE PROPRIETOR PalbamClass IL-18960 EN-HAROD IHUD-ISRAEL.	INNER RADIUS		SURF. ROUGH. PER ISO 1302	1200-Heavy Duty Bottom Shelf-Solid		REV
		DATE	NAME	WX1219		SCALE 1:5
	DESG	02/09/2005	alexey			SIZE A3
	APPR			DWG. No.	PCWX1219-000	SHEET 1 / 1
	CONTROLLED COPIES OF THIS DOCUMENT HAVE A RED ISSUE DATE STAMP, THESE COPIES WILL BE UPDATED BY PALBAM CLASS INFORMATION SYSTEM. ANY OTHER COPY IS NOT CONTROLLED AND THEREFORE NOT UPDATED. PLEASE CHECK WITH INFORMATION SYSTEM FOR VALIDITY OF DOCUMENT.					