

HCFC2 Polyclonal Antibody

Catalog number: 13567-1-AP

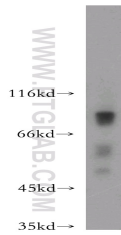
Size: 20 µg/150 µl

Source: Rabbit

Isotype: IgG

Synonyms:

HCFC2; HCFC2, HCF 2, C2 factor,
HCF2, host cell factor C2



mouse testis tissue were subjected to SDS PAGE followed by western blot with 13567-1-AP(HCFC2 antibody) at dilution of 1:300

Applications

Tested applications:	ELISA, WB
Species specificity:	Human, mouse, rat; other species not tested.
Calculated HCFC2 MW:	792aa,87 kDa
Observed HCFC2 MW:	87kd
Positive WB detected in	Mouse testis tissue
Recommended dilution:	WB: 1:500-1:5000

Application key: WB = Western blotting, IHC = Immunohistochemistry, IF = Immunofluorescence, IP = Immunoprecipitation

Immunogen information

Immunogen:	Ag4461
GenBank accession number:	BC033799
Gene ID (NCBI):	29915
Full name:	Host cell factor C2

Product information

Purification method:	Antigen affinity purification
Storage:	PBS with 0.02% sodium azide and 50% glycerol pH 7.3. Store at -20°C.