

MAGOH Polyclonal Antibody

Catalog number: 12347-1-AP

Size: 20 µg/150 µl

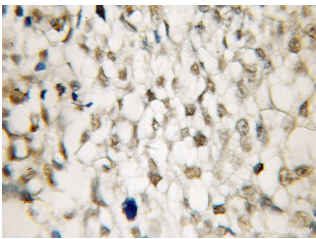
Source: Rabbit

Isotype: IgG

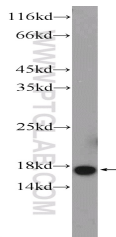
Synonyms:

MAGOH; MAGOH, MAGOHA,

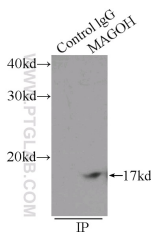
Protein mago nashi homolog



Immunohistochemical of paraffin-embedded human ovary tumor using 12347-1-AP (MAGOH antibody) at dilution of 1:50 (under 10x lens)



K-562 cells were subjected to SDS PAGE followed by western blot with 12347-1-AP (MAGOH Antibody) at dilution of 1:1000



IP Result of anti-MAGOH (IP:12347-1-AP, 3µg; Detection:12347-1-AP 1:500) with K-562 cells lysate 2400µg.

Background

MAGOH, belonging to the mago nashi family, is a component of a splicing-dependent multiprotein exon junction complex (EJC) deposited at splice junction on mRNAs. The EJC is a dynamic structure consisting of a few core proteins and several more peripheral nuclear and cytoplasmic associated factors that join the complex only transiently either during EJC assembly or during subsequent mRNA metabolism. Core components of the EJC functions to mark the position of the exon-exon junction in the mature mRNA and thereby influences downstream processes of gene expression including mRNA splicing, nuclear mRNA export, subcellular mRNA localization, translation efficiency and nonsense-mediated mRNA decay (NMD). MAGOH regulates the transcriptional activation of STAT3 by interfering complex formation between STAT3 and a core EJC component Y14.

Applications

Tested applications:	ELISA, IHC, IP, WB
Cited applications:	IHC, IP, WB
Species specificity:	Human; other species not tested.
Cited species:	Human, mouse
Calculated MAGOH MW:	146aa, 17 kDa
Observed MAGOH MW:	17 kDa
Positive WB detected in	K-562 cells, HeLa cells, HL-60 cells, human brain tissue, Raji cells
Positive IP detected in	K-562 cells
Positive IHC detected in	Human ovary tumor tissue
Recommended dilution:	WB: 1:500-1:5000 IP: 1:200-1:2000 IHC: 1:20-1:200

Application key: WB = Western blotting, IHC = Immunohistochemistry, IF = Immunofluorescence, IP = Immunoprecipitation

Immunogen information

Immunogen:	Ag3004
GenBank accession number:	BC018211
Gene ID (NCBI):	4116
Full name:	Mago-nashi homolog, proliferation-associated (Drosophila)

Product information

Purification method:	Antigen affinity purification
Storage:	PBS with 0.1% sodium azide and 50% glycerol pH 7.3. Store at -20°C.