

NCLN Polyclonal Antibody

Catalog number: 10985-1-AP

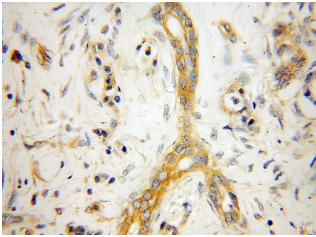
Size: 20 µg/150 µl

Source: Rabbit

Isotype: IgG

Synonyms:

NCLN;



Immunohistochemistry of paraffin-embedded human pancreas cancer using 10985-1-AP (NCLN Antibody) at Dilution 1:50 (under 40x lens)

Applications

Tested applications:	ELISA, IHC
Species specificity:	Human, mouse, rat; other species not tested.
Calculated NCLN MW:	60kd
Observed NCLN MW:	
Positive IHC detected in:	Human pancreas cancer
Recommended dilution:	IHC: 1:20-1:200

Application key: WB = Western blotting, IHC = Immunohistochemistry, IF = Immunofluorescence, IP = Immunoprecipitation, FC = Flow cytometry

Immunogen information

Immunogen:	Ag1430
GenBank accession number:	BC013283
Gene ID (NCBI):	56926
Full name:	Nicalin homolog (zebrafish)

Product information

Purification method:	Antigen affinity purification
Storage:	PBS with 0.1% sodium azide and 50% glycerol pH 7.3. Store at -20°C.