

## IL21R Polyclonal Antibody

Catalog number: 10533-1-AP

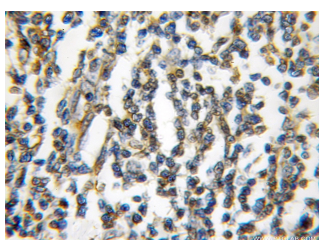
Size: 55 µg/150 µl

Source: Rabbit

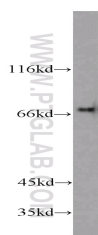
Isotype: IgG

Synonyms:

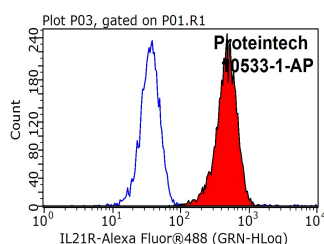
IL21R; CD360, IL 21 receptor, IL 21R, IL21R, interleukin 21 receptor, N1LR, Novel interleukin receptor



Immunohistochemical of paraffin-embedded human lymphoma using 10533-1-AP(IL21R antibody) at dilution of 1:10 (under 10x lens)



Raji cells were subjected to SDS PAGE followed by western blot with 10533-1-AP(IL21R antibody) at dilution of 1:500



1X10<sup>6</sup> K-562 cells were stained with 0.2ug IL21R antibody (10533-1-AP, red) and control antibody (blue). Fixed with 90% MeOH blocked with 3% BSA (30 min). Alexa Fluor 488-conjugated AffiniPure Goat Anti-Rabbit IgG(H+L) with dilution 1:1000.

### Applications

Tested applications:

ELISA, WB, IHC, FC, IP

Species specificity:

Human, Mouse; other species not tested.

Calculated IL21R MW:

59.1 kDa

Observed IL21R MW:

68-70 kDa

Positive WB detected in

Raji cells, COLO 320 cells, K-562 cells, mouse thymus tissue

Positive IP detected in

COLO 320 cells

Positive IHC detected in

Human lymphoma tissue

Positive FC detected in

K-562 cells

Recommended dilution:

WB: 1:200-1:2000

IP: 1:500-1:5000

IHC: 1:10-1:100

FC: N/A

Application key: WB = Western blotting, IHC = Immunohistochemistry, IF = Immunofluorescence, IP = Immunoprecipitation

### Immunogen information

Immunogen:

Ag0762

GenBank accession number:

BC004348

Gene ID (NCBI):

50615

Full name:

Interleukin 21 receptor

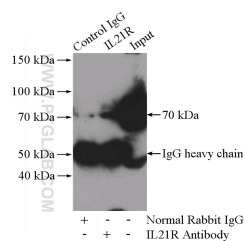
### Product information

Purification method:

Antigen affinity purification

Storage:

PBS with 0.1% sodium azide and 50% glycerol pH 7.3. Store at -20°C.



# **IP Result of anti-IL21R**

**(IP:10533-1-AP, 4ug;**

**Detection:10533-1-AP 1:1000)**

**with COLO 320 cells lysate**

**2000ug.**