

## ETV6 Polyclonal Antibody

Catalog number: 13182-1-AP

Size: 20 µg/150 µl

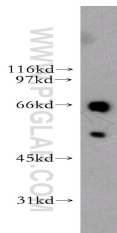
Source: Rabbit

Isotype: IgG

Synonyms:

ETV6; ETV6, ETS translocation  
variant 6, ETS related protein

Tel1, TEL1, TEL



A431 cells were subjected to SDS  
PAGE followed by western blot with  
13182-1-AP (ETV6 antibody) at  
dilution of 1:1000

### Applications

Tested applications:	ELISA, WB
Species specificity:	Human, mouse, rat; other species not tested.
Calculated ETV6 MW:	452aa, 53 kDa
Observed ETV6 MW:	57kd
Positive WB detected in:	A431 cells, HeLa cells
Recommended dilution:	WB: 1:500-1:5000

Application key: WB = Western blotting, IHC = Immunohistochemistry, IF = Immunofluorescence, IP = Immunoprecipitation

### Immunogen information

Immunogen:	Ag3852
GenBank accession number:	BC043399
Gene ID (NCBI):	2120
Full name:	Ets variant 6

### Product information

Purification method:	Antigen affinity purification
Storage:	PBS with 0.1% sodium azide and 50% glycerol pH 7.3. Store at -20°C.