

GAGE2D Polyclonal Antibody

Catalog number: 12532-1-AP

Size: 85 µg/150 µl

Source: Rabbit

Isotype: IgG

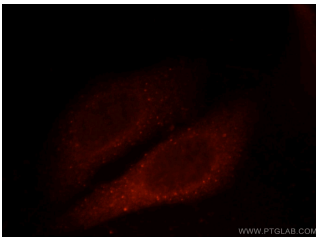
Synonyms:

GAGE2D; Cancer/testis antigen

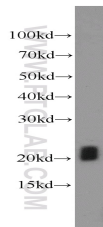
4.8, CT4.8, G antigen 2D, G

antigen 8, GAGE 8, GAGE2D,

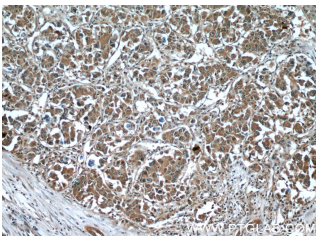
GAGE8



Immunofluorescent analysis of HepG2 cells, using GAGE2D antibody 12532-1-AP at 1:25 dilution and Rhodamine-labeled goat anti-rabbit IgG (red).



K-562 cells were subjected to SDS PAGE followed by western blot with 12532-1-AP(GAGE2D antibody) at dilution of 1:1000



Immunohistochemistry of paraffin-embedded human liver cancer tissue slide using 12532-1-AP(GAGE2D Antibody) at dilution of 1:50 (under 10x lens)

Background

GAGE2D, also named as GAGE8 and CT4.8, is expressed in testis and tumor tissues.

Applications

Tested applications:	ELISA, WB, IF, IHC
Species specificity:	Human; other species not tested.
Calculated GAGE2D MW:	116aa,13 kDa
Observed GAGE2D MW:	18-22kd
Positive WB detected in	K-562 cells, HeLa cells, human testis tissue
Positive IHC detected in	Human liver cancer tissue, human testis tissue
Positive IF detected in	HepG2 cells
Recommended dilution:	WB: 1:500-1:5000
	IHC: 1:20-1:200
	IF: 1:10-1:100

Application key: WB = Western blotting, IHC = Immunohistochemistry, IF = Immunofluorescence, IP = Immunoprecipitation

Immunogen information

Immunogen:	Ag3230
GenBank accession number:	BC018052
Gene ID (NCBI):	729408
Full name:	G antigen 2D

Product information

Purification method:	Antigen affinity purification
Storage:	PBS with 0.1% sodium azide and 50% glycerol pH 7.3. Store at -20°C.