

Tom22 Polyclonal Antibody

Catalog number: 11278-1-AP

Size: 22 µg/150 µl

Source: Rabbit

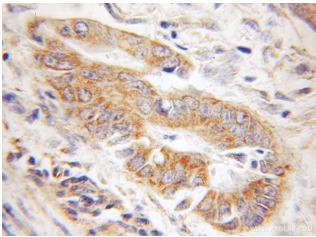
Isotype: IgG

Synonyms:

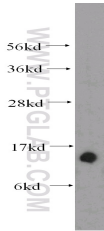
TOMM22; 1C9 2, hTom22,

MST065, MSTP065, TOM22,

TOMM22



Immunohistochemical of paraffin-embedded human colon cancer using 11278-1-AP(TOMM22 antibody) at dilution of 1:100 (under 10x lens)



human liver tissue were subjected to SDS PAGE followed by western blot with 11278-1-AP(TOMM22 antibody) at dilution of 1:500

Applications

Tested applications:	ELISA, WB, IHC
Cited applications:	WB
Species specificity:	Human; other species not tested.
Cited species:	HUMAN
Calculated Tom22 MW:	15 kDa
Observed Tom22 MW:	15 kDa
Positive WB detected in	Human liver tissue, HeLa cells, human lung tissue, K-562 cells
Positive IHC detected in	Human colon cancer tissue
Recommended dilution:	WB: 1:200-1:2000 IHC: 1:20-1:200

Application key: WB = Western blotting, IHC = Immunohistochemistry, IF = Immunofluorescence, IP = Immunoprecipitation

Immunogen information

Immunogen:	Ag1797
GenBank accession number:	BC009363
Gene ID (NCBI):	56993
Full name:	Translocase of outer mitochondrial membrane 22 homolog (yeast)

Product information

Purification method:	Antigen affinity purification
Storage:	PBS with 0.1% sodium azide and 50% glycerol pH 7.3. Store at -20°C.