

## UBE2E2 Polyclonal Antibody

Catalog number: 11844-1-AP

Size: 34 µg/150 µl

Source: Rabbit

Isotype: IgG

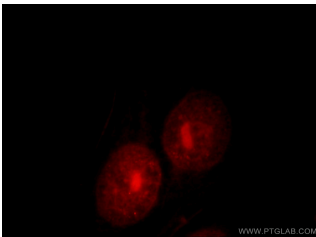
Synonyms:

UBE2E2; FLJ25157, UBCH8,

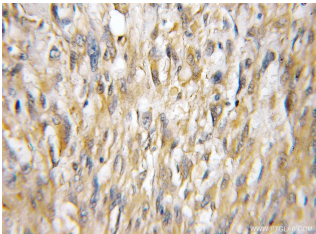
UBE2E2, Ubiquitin carrier

protein E2, Ubiquitin protein

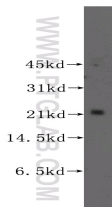
ligase E2



Immunofluorescent analysis of HepG2 cells, using UBE2E2 antibody 11844-1-AP at 1:25 dilution and Rhodamine-labeled goat anti-rabbit IgG (red).



Immunohistochemical of paraffin-embedded human gliomas using 11844-1-AP(UBE2E2 antibody) at dilution of 1:50 (under 10x lens)



human thyroid gland tissue were subjected to SDS PAGE followed by western blot with 11844-1-AP(UBE2E2 antibody) at dilution of 1:300

### Background

UBE2E2(ubiquitin-conjugating enzyme E2 E2) is also named as UBCH8 and belongs to the ubiquitin-conjugating enzyme family. This gene encodes a 22 kDa protein that functions as a major ISG15 E2 enzyme raises the possibility that ISG15 conjugation might use UbCH8-competent Ub E3 enzymes and also function as an E2 for several Ub E3 enzymes, including both HECT E3s and RING E3s(PMID: 15131269).

### Applications

Tested applications:	ELISA, WB, IHC, IF
Cited applications:	WB
Species specificity:	Human, Mouse, Rat; other species not tested.
Cited species:	Human
Calculated UBE2E2 MW:	201aa, 22 kDa
Observed UBE2E2 MW:	22 kDa
Positive WB detected in	Human thyroid gland tissue, human brain tissue, mouse embryo tissue
Positive IHC detected in	Human gliomas tissue
Positive IF detected in	HepG2 cells
Recommended dilution:	WB: 1:200-1:2000 IHC: 1:20-1:200 IF: 1:10-1:100

Application key: WB = Western blotting, IHC = Immunohistochemistry, IF = Immunofluorescence, IP = Immunoprecipitation

### Immunogen information

Immunogen:	Ag2509
GenBank accession number:	BC022332
Gene ID (NCBI):	7325
Full name:	Ubiquitin-conjugating enzyme E2E 2 (UBC4/5 homolog, yeast)

### Product information

Purification method:	Antigen affinity purification
Storage:	PBS with 0.1% sodium azide and 50% glycerol pH 7.3. Store at -20°C.