

## FKBP52 Polyclonal Antibody

Catalog number: 10655-1-AP

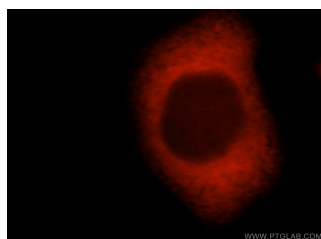
Size: 50 µg/150 µl

Source: Rabbit

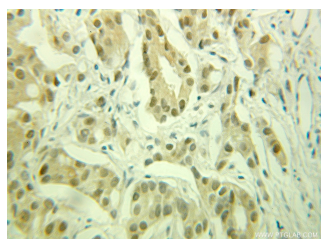
Isotype: IgG

Synonyms:

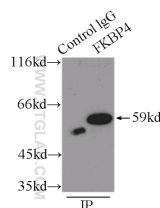
FKBP4; 51 kDa FK506 binding protein, 52 kDa FK506 binding protein, 52 kDa FKBP, 59 kDa immunophilin, FK506 binding protein 4, FK506 binding protein 4, 59kDa, FKBP 4, FKBP 52, FKBP4, FKBP51, FKBP52, FKBP59, HBI, HSP binding immunophilin, Hsp56, Immunophilin FKBP52, p52, p59, PPIase, PPIase FKBP4, Rotamase



Immunofluorescent analysis of MCF-7 cells, using FKBP4 antibody 10655-1-AP at 1:25 dilution and Rhodamine-labeled goat anti-rabbit IgG (red).



Immunohistochemical of paraffin-embedded human prostate cancer using 10655-1-AP (FKBP52 antibody) at dilution of 1:100 (under 25x lens)



IP Result of anti-FKBP52 (IP:10655-1-AP, 3µg; Detection:10655-1-AP 1:1000) with HeLa cells lysate 3000µg.

### Background

FKBP52 (FK506 binding protein 4) is a member of the immunophilin protein family that comprises intracellular protein effectors of immunosuppressive drugs, and it is known as a steroid receptor-associated protein. As a novel regulator of microtubule dynamics, FKBP52 is associated with the motor protein dynein and with the cytoskeleton during mitosis. FKBP52 is highly expressed in CNS regions susceptible to Alzheimer's, and plays a role in modulating toxicity of Abeta peptides. The protein can associate with the Tau function, and may help to decipher and modulate the events involved in Tau-induced neurodegeneration. In addition, FKBP52 is likely to play a role in growth and development of the male genitalia.

### Applications

Tested applications:	ELISA, WB, IHC, IF, IP, FC
Cited applications:	IHC, WB
Species specificity:	Human, Mouse; other species not tested.
Cited species:	Human, mouse
Calculated FKBP52 MW:	59 kDa
Observed FKBP52 MW:	56-59 kDa
Positive WB detected in	HeLa cells, Jurkat cells, NIH/3T3 cells, PC-3 cells
Positive IP detected in	HeLa cells
Positive IHC detected in	Human prostate cancer tissue
Positive IF detected in	MCF-7 cells
Positive FC detected in	MCF-7 cells
Recommended dilution:	WB: 1:500-1:5000 IP: 1:500-1:5000 IHC: 1:20-1:200 IF: 1:10-1:100 FC: N/A

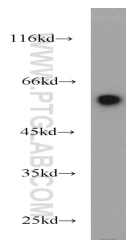
Application key: WB = Western blotting, IHC = Immunohistochemistry, IF = Immunofluorescence, IP = Immunoprecipitation

### Immunogen information

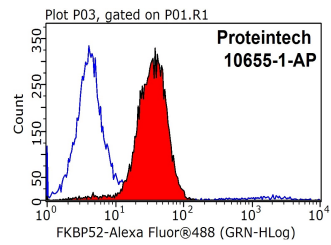
Immunogen:	Ag1019
GenBank accession number:	BC007924
Gene ID (NCBI):	2288
Full name:	FK506 binding protein 4, 59kDa

### Product information

Purification method:	Antigen affinity purification
Storage:	PBS with 0.1% sodium azide and 50% glycerol pH 7.3. Store at -20°C.



HeLa cells were subjected to SDS PAGE followed by western blot with 10655-1-AP(FKBP52 antibody) at dilution of 1:1000



1X10<sup>6</sup> MCF-7 cells were stained with 0.2ug FKBP52 antibody (10655-1-AP, red) and control antibody (blue). Fixed with 90% MeOH blocked with 3% BSA (30 min). Alexa Fluor 488-conjugated AffiniPure Goat Anti-Rabbit IgG(H+L) with dilution 1:1000.