

SGCE Polyclonal Antibody

Catalog number: 12407-1-AP

Size: 31 µg/150 µl

Source: Rabbit

Isotype: IgG

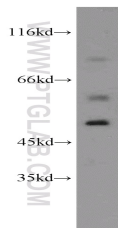
Synonyms:

SGCE; DYT11, Epsilon

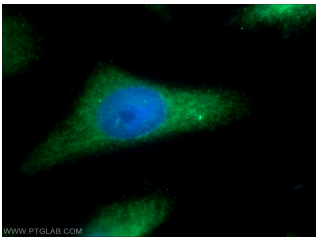
sarcoglycan, Epsilon SG, ESG,

sarcoglycan, epsilon, SGCE, ε-

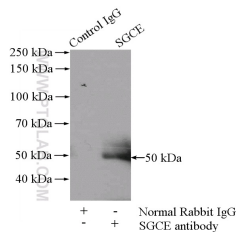
sarcoglycan



mouse brain tissue were subjected to SDS PAGE followed by western blot with 12407-1-AP(SGCE antibody) at dilution of 1:500



Immunofluorescent analysis of HeLa cells using 12407-1-AP(SGCE Antibody) at dilution of 1:25 and Alexa Fluor 488-conjugated AffiniPure Goat Anti-Rabbit IgG(H+L)



IP Result of anti-SGCE (IP:12407-1-AP, 4µg; Detection:12407-1-AP 1:500) with mouse heart tissue lysate 4000µg.

Applications

Tested applications:	ELISA, IF, WB, IP
Cited applications:	WB
Species specificity:	Human,Mouse,Rat; other species not tested.
Cited species:	Mouse
Calculated SGCE MW:	437aa,50 kDa
Observed SGCE MW:	50 kDa
Positive WB detected in	Mouse brain tissue, human brain tissue, human heart tissue, mouse heart tissue
Positive IP detected in	Mouse heart tissue
Positive IF detected in	HeLa cells
Recommended dilution:	WB: 1:200-1:2000 IP: 1:200-1:2000 IF: 1:10-1:100

Application key: WB = Western blotting, IHC = Immunohistochemistry, IF = Immunofluorescence, IP = Immunoprecipitation

Immunogen information

Immunogen:	Ag3118
GenBank accession number:	BC021709
Gene ID (NCBI):	8910
Full name:	Sarcoglycan, epsilon

Product information

Purification method:	Antigen affinity purification
Storage:	PBS with 0.1% sodium azide and 50% glycerol pH 7.3. Store at -20°C.