

GCLM Polyclonal Antibody

Catalog number: 14241-1-AP

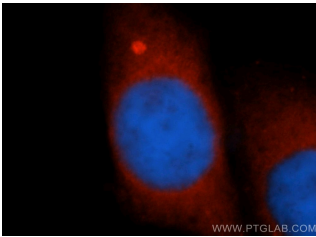
Size: 32 µg/150 µl

Source: Rabbit

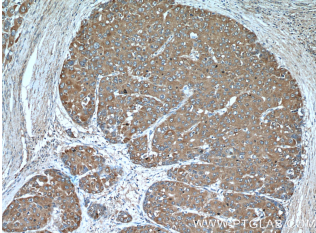
Isotype: IgG

Synonyms:

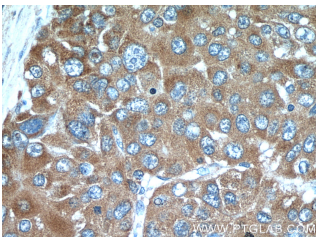
GCLM; Gamma ECS regulatory subunit, GCLM, GCS light chain, GLCLR



Immunofluorescent analysis of HepG2 cells, using GCLM antibody 14241-1-AP at 1:50 dilution and Rhodamine-labeled goat anti-rabbit IgG (red). Blue pseudocolor = DAPI (fluorescent DNA dye).



Immunohistochemical of paraffin-embedded human liver cancer using 14241-1-AP (GCLM antibody) at dilution of 1:50 (under 10x lens)



Immunohistochemical of paraffin-embedded human liver cancer using 14241-1-AP (GCLM antibody) at dilution of 1:50 (under 40x lens)

Background

GCLM (Glutamate--cysteine ligase regulatory subunit) is also named as GLCLR and belongs to the aldo/keto reductase family. It catalyzes the first step of GSH synthesis and is involved in gamma-glutamyl cycle. GCLM is implicated in some forms of hemolytic anemia.

Applications

Tested applications:	ELISA, WB, IHC, IF, FC, IP
Cited applications:	WB
Species specificity:	Human, Mouse, Rat; other species not tested.
Cited species:	Human, mouse, rat
Calculated GCLM MW:	31 kDa
Observed GCLM MW:	31 kDa
Positive WB detected in	A431 cells, K-562 cells, L02 cells, MCF7 cells
Positive IP detected in	A431 cells
Positive IHC detected in	Human liver cancer tissue, human skeletal muscle tissue
Positive IF detected in	HepG2 cells
Positive FC detected in	HepG2 cells
Recommended dilution:	WB: 1:200-1:2000 IP: 1:500-1:5000 IHC: 1:20-1:200 IF: 1:20-1:200 FC: N/A

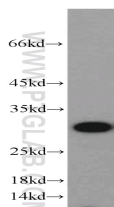
Application key: WB = Western blotting, IHC = Immunohistochemistry, IF = Immunofluorescence, IP = Immunoprecipitation

Immunogen information

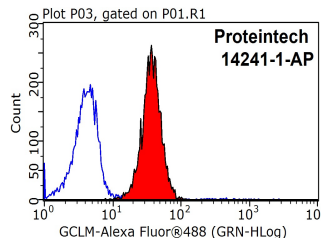
Immunogen:	Ag5497
GenBank accession number:	BC041809
Gene ID (NCBI):	2730
Full name:	Glutamate-cysteine ligase, modifier subunit

Product information

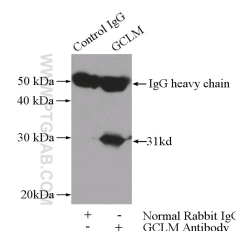
Purification method:	Antigen affinity purification
Storage:	PBS with 0.02% sodium azide and 50% glycerol pH 7.3. Store at -20°C.



A431 cells were subjected to



1X10⁶ HepG2 cells were



IP Result of anti-GCLM

SDS PAGE followed by western blot with 14241-1-AP(GCLM antibody) at dilution of 1:500

stained with 0.2ug GCLM antibody (14241-1-AP, red) and control antibody (blue). Fixed with 90% MeOH blocked with 3% BSA (30 min). Alexa Fluor 488-conjugated AffiniPure Goat Anti-Rabbit IgG(H+L) with dilution 1:1500.

(IP:14241-1-AP, 3ug; Detection:14241-1-AP 1:1000) with A431 cells lysate 3040ug.