

SKP1 Polyclonal Antibody

Catalog number: 10990-2-AP

Size: 84 µg/150 µl

Source: Rabbit

Isotype: IgG

Synonyms:

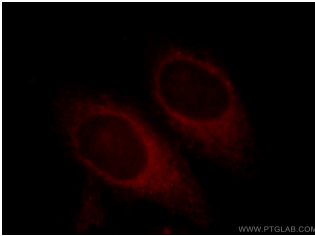
SKP1; EMC19, NET19, OCP 2,

OCP II, OCP2, Organ of Corti

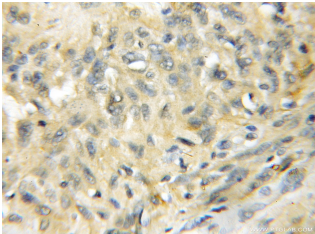
protein 2, Organ of Corti

protein II, p19A, p19skp1, SIII,

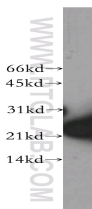
SKP1, SKP1A, TCEB1L



Immunofluorescent analysis of HepG2 cells, using SKP1 antibody 10990-2-AP at 1:25 dilution and Rhodamine-labeled goat anti-rabbit IgG (red).



Immunohistochemical of paraffin-embedded human gliomas using 10990-2-AP(SKP1 antibody) at dilution of 1:50 (under 10x lens)



human brain tissue were subjected to SDS PAGE followed by western blot with 10990-2-AP(SKP1 antibody) at dilution of 1:500

Background

SKP1(S-phase kinase-associated protein 1) is also named as EMC19, OCP2, SKP1A, TCEB1L,belongs to the SKP1 family.It is an essential component of the SCF (SKP1-CUL1-F-box protein) ubiquitin ligase complex, which mediates the ubiquitination of proteins involved in cell cycle progression, signal transduction and transcription.

Applications

Tested applications:	ELISA, WB, IHC, IF
Species specificity:	Human, Mouse, Rat; other species not tested.
Calculated SKP1 MW:	19 kDa
Observed SKP1 MW:	19 kDa
Positive WB detected in	Human brain tissue, HeLa cells
Positive IHC detected in	Human gliomas tissue
Positive IF detected in	HepG2 cells
Recommended dilution:	WB: 1:200-1:2000
	IHC: 1:20-1:200
	IF: 1:10-1:100

Application key: WB = Western blotting, IHC = Immunohistochemistry, IF = Immunofluorescence, IP = Immunoprecipitation

Immunogen information

Immunogen:	Ag1457
GenBank accession number:	BC009839
Gene ID (NCBI):	6500
Full name:	S-phase kinase-associated protein 1

Product information

Purification method:	Antigen affinity purification
Storage:	PBS with 0.1% sodium azide and 50% glycerol pH 7.3. Store at -20°C.