

PAR2 Polyclonal Antibody

Catalog number: 12160-1-AP

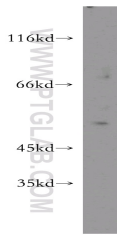
Size: 20 µg/150 µl

Source: Rabbit

Isotype: IgG

Synonyms:

F2RL1; F2RL1, G protein coupled receptor 11, GPR11, PAR 2, PAR2, Thrombin receptor like 1



mouse colon tissue were subjected to SDS PAGE followed by western blot with 12160-1-AP(F2RL1 antibody) at dilution of 1:300

Background

Proteinase-activated receptors (PARs) are G protein-coupled receptors activated through cleavage of their N-termini by mainly serine proteases. The family of PARs include four members: PAR1, PAR2, PAR3 and PAR4. PAR2, also known as F2RL1, is expressed in epithelial cells (e.g., lung, gastrointestinal tract), endothelial cells, smooth muscle cells, fibroblasts, nerves, and some immune and inflammatory cells. PAR2 knockout mice and PAR2 agonists and antagonists have implicated PAR2 as a promising target in inflammatory conditions; respiratory, gastrointestinal, metabolic, cardiovascular, and neurological dysfunction; and cancers. (PMID:23895492)

Applications

Tested applications:	ELISA, WB
Species specificity:	Human,Mouse,Rat; other species not tested.
Calculated PAR2 MW:	397aa,44 kDa
Observed PAR2 MW:	50-55kd
Positive WB detected in	Mouse colon tissue
Recommended dilution:	WB: 1:200-1:1000

Application key: WB = Western blotting, IHC = Immunohistochemistry, IF = Immunofluorescence, IP = Immunoprecipitation

Immunogen information

Immunogen:	Ag2801
GenBank accession number:	BC018130
Gene ID (NCBI):	2150
Full name:	Coagulation factor II (thrombin) receptor-like 1

Product information

Purification method:	Antigen affinity purification
Storage:	PBS with 0.02% sodium azide and 50% glycerol pH 7.3. Store at -20°C.