

## SLC22A2 Polyclonal Antibody

Catalog number: 13594-1-AP

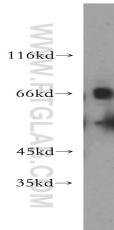
Size: 20 µg/150 µl

Source: Rabbit

Isotype: IgG

Synonyms:

SLC22A2; MGC32628; OCT2



mouse kidney tissue were subjected to SDS PAGE followed by western blot with 13594-1-AP(SLC22A2 Antibody) at dilution of 1:800

### Applications

Tested applications:	ELISA, WB
Species specificity:	Human, mouse, rat; other species not tested.
Positive WB detected in:	Mouse kidney tissue, HEK-293 cells
Calculated SLC22A2 MW:	555aa,63kd
Observed SLC22A2 MW:	60-70kd
Recommended dilution:	WB: 1:200-1:2000

Application key: WB = Western blotting, IHC = Immunohistochemistry, IF = Immunofluorescence, IP = Immunoprecipitation, FC = Flow cytometry

### Immunogen information

Immunogen:	Ag4500
GenBank accession number:	BC039899
Gene ID (NCBI):	6582
Full name:	Solute carrier family 22 (organic cation transporter), member 2

### Product information

Purification method:	Antigen affinity purification
Storage:	PBS with 0.02% sodium azide and 50% glycerol pH 7.3. Store at -20°C.