

PTH2R Polyclonal Antibody

Catalog number: 14166-1-AP

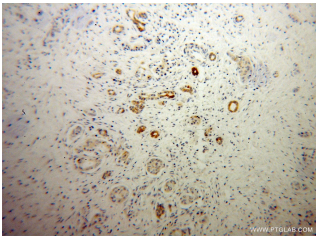
Size: 36 µg/150 µl

Source: Rabbit

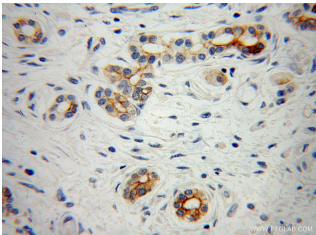
Isotype: IgG

Synonyms:

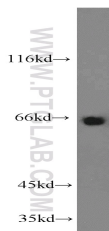
PTH2R; parathyroid hormone 2 receptor, PTH2 receptor, PTH2R, PTHR2



Immunohistochemical of paraffin-embedded human pancreas cancer using 14166-1-AP (PTH2R antibody) at dilution of 1:50 (under 10x lens)



Immunohistochemical of paraffin-embedded human pancreas cancer using 14166-1-AP (PTH2R antibody) at dilution of 1:50 (under 40x lens)



L02 cells were subjected to SDS PAGE followed by western blot with 14166-1-AP (PTH2R antibody) at dilution of 1:500

Applications

Tested applications:	ELISA, WB, IHC
Species specificity:	Human, Mouse, Rat; other species not tested.
Calculated PTH2R MW:	550aa, 62 kDa
Observed PTH2R MW:	62-66 kDa
Positive WB detected in	L02 cells, BxPC-3 cells, human testis tissue, mouse liver tissue, mouse pancreas tissue, mouse testis tissue
Positive IHC detected in	Human pancreas cancer tissue, human renal cell carcinoma tissue
Recommended dilution:	WB: 1:200-1:2000 IHC: 1:20-1:200

Application key: WB = Western blotting, IHC = Immunohistochemistry, IF = Immunofluorescence, IP = Immunoprecipitation

Immunogen information

Immunogen:	Ag5364
GenBank accession number:	BC036811
Gene ID (NCBI):	5746
Full name:	Parathyroid hormone 2 receptor

Product information

Purification method:	Antigen affinity purification
Storage:	PBS with 0.02% sodium azide and 50% glycerol pH 7.3. Store at -20°C.