

## Alpha adducin Polyclonal Antibody

Catalog number: 10791-1-AP

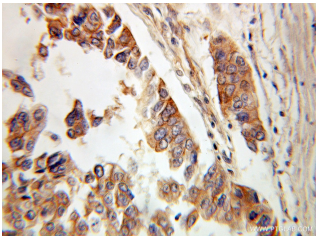
Size: 30 µg/150 µl

Source: Rabbit

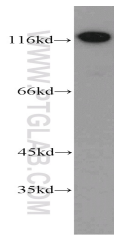
Isotype: IgG

Synonyms:

ADD1; ADD1, ADDA, adducin 1 (alpha), Alpha adducin



Immunohistochemical of paraffin-embedded human ovary tumor using 10791-1-AP(ADD1 antibody) at dilution of 1:100 (under 10x lens)



K-562 cells were subjected to SDS PAGE followed by western blot with 10791-1-AP(ADD1 antibody) at dilution of 1:800

### Applications

Tested applications:	ELISA, WB, IHC
Species specificity:	Human, Mouse, Rat; other species not tested.
Calculated Alpha adducin MW:	81kd, 84kd, 70kd
Observed Alpha adducin MW:	115-120kd
Positive WB detected in	K-562 cells, mouse testis tissue
Positive IHC detected in	Human ovary tumor tissue
Recommended dilution:	WB: 1:500-1:5000 IHC: 1:20-1:200

Application key: WB = Western blotting, IHC = Immunohistochemistry, IF = Immunofluorescence, IP = Immunoprecipitation

### Immunogen information

Immunogen:	Ag1245
GenBank accession number:	BC013393
Gene ID (NCBI):	118
Full name:	Adducin 1 (alpha)

### Product information

Purification method:	Antigen affinity purification
Storage:	PBS with 0.1% sodium azide and 50% glycerol pH 7.3. Store at -20°C.