

ENO1 Polyclonal Antibody

Catalog number: 11204-1-AP

Size: 40 µg/150 µl

Source: Rabbit

Isotype: IgG

Synonyms:

ENO1; Alpha enolase, C myc promoter binding protein,

ENO1, ENO1L1, Enolase 1,

enolase 1, (alpha), MBP 1,

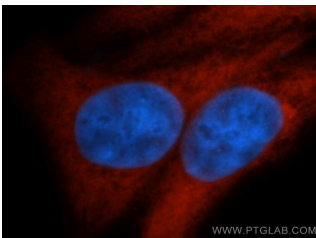
MBPB1, MPB 1, MPB1, NNE,

Non neural enolase,

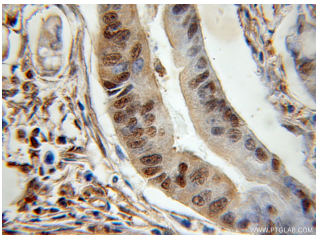
Phosphopyruvate hydratase,

Plasminogen binding protein,

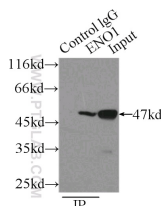
PPH



Immunofluorescent analysis of HepG2 cells, using ENO1 antibody 11204-1-AP at 1:50 dilution and Rhodamine-labeled goat anti-rabbit IgG (red). Blue pseudocolor = DAPI (fluorescent DNA dye).



Immunohistochemical of paraffin-embedded human colon cancer using 11204-1-AP(ENO1 antibody) at dilution of 1:50 (under 10x lens)



IP Result of anti-ENO1 (IP:11204-1-AP, 3ug; Detection:11204-1-AP 1:500) with mouse skeletal muscle tissue lysate 3500ug.

Background

Enolase is an important glycolytic enzyme involved in the interconversion of 2-phosphoglycerate to phosphoenolpyruvate. Enolase were down-regulated in oxLDL-treated cells or in VLDL-treated cells. And it identified which are associated with glucose metabolism were down-regulated in the process of foam cells formation. (19756395)

Applications

Tested applications:	ELISA, WB, IHC, IF, IP, FC
Cited applications:	IF, IHC, IP, WB
Species specificity:	Human, Mouse, Rat; other species not tested.
Cited species:	Human, mouse, rat
Calculated ENO1 MW:	47 kDa
Observed ENO1 MW:	47 kDa
Positive WB detected in	Human skeletal muscle tissue, PC-3 cells, SGC-7901 cells
Positive IP detected in	Mouse skeletal muscle tissue
Positive IHC detected in	Human colon cancer tissue, human liver cancer tissue, human stomach cancer tissue
Positive IF detected in	HepG2 cells
Positive FC detected in	HeLa cells
Recommended dilution:	WB: 1:500-1:5000 IP: 1:200-1:2000 IHC: 1:20-1:200 IF: 1:20-1:200 FC: N/A

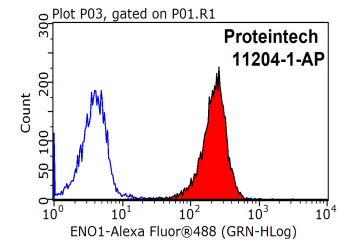
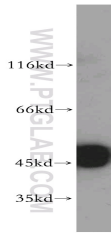
Application key: WB = Western blotting, IHC = Immunohistochemistry, IF = Immunofluorescence, IP = Immunoprecipitation

Immunogen information

Immunogen:	Ag1692
GenBank accession number:	BC015641
Gene ID (NCBI):	2023
Full name:	Enolase 1, (alpha)

Product information

Purification method:	Antigen affinity purification
Storage:	PBS with 0.1% sodium azide and 50% glycerol pH 7.3. Store at -20°C.



human skeletal muscle tissue were subjected to SDS PAGE followed by western blot with 11204-1-AP(ENO1 antibody) at dilution of 1:500

1X10⁶ HeLa cells were stained with 0.2ug ENO1 antibody (11204-1-AP, red) and control antibody (blue). Fixed with 90% MeOH blocked with 3% BSA (30 min). Alexa Fluor 488-conjugated AffiniPure Goat Anti-Rabbit IgG(H+L) with dilution 1:1500.