

RAX2 Polyclonal Antibody

Catalog number: 11466-1-AP

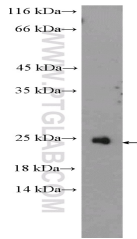
Size: 77 µg/150 µl

Source: Rabbit

Isotype: IgG

Synonyms:

RAX2; ARMD6, CORD11, QRX,
RAX2, RAXL1



Jurkat cells were subjected to SDS PAGE followed by western blot with 11466-1-AP (RAX2 Antibody) at dilution of 1:300

Applications

Tested applications:	ELISA, WB
Species specificity:	Human; other species not tested.
Calculated RAX2 MW:	184aa, 20 kDa
Observed RAX2 MW:	22-27 kDa
Positive WB detected in:	Jurkat cells
Recommended dilution:	WB: 1:200-1:1000

Application key: WB = Western blotting, IHC = Immunohistochemistry, IF = Immunofluorescence, IP = Immunoprecipitation

Immunogen information

Immunogen:	Ag2046
GenBank accession number:	BC018709
Gene ID (NCBI):	84839
Full name:	Retina and anterior neural fold homeobox 2

Product information

Purification method:	Antigen affinity purification
Storage:	PBS with 0.1% sodium azide and 50% glycerol pH 7.3. Store at -20°C.