

Syntaxin 16 Polyclonal Antibody

Catalog number: 11201-1-AP

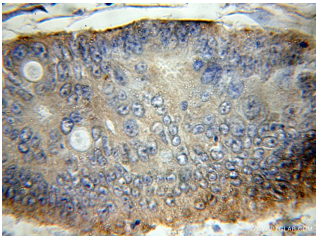
Size: 50 µg/150 µl

Source: Rabbit

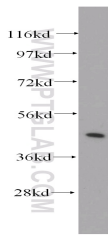
Isotype: IgG

Synonyms:

STX16; hsyn16, STX16, SYN16,
syntaxin 16



Immunohistochemical of paraffin-embedded human colon cancer using 11201-1-AP (STX16 antibody) at dilution of 1:50 (under 10x lens)



human kidney tissue were subjected to SDS PAGE followed by western blot with 11201-1-AP (STX16 antibody) at dilution of 1:500

Background

Syntaxin 16 (STX16), also named as SYN16, belongs to the syntaxin family. Syntaxins are target membrane SNAREs (Soluble NSF attachment protein receptors) which are membrane components that determine the specificity of the docking and fusion of vesicles to target membranes. STX16 is localized to the Golgi apparatus.

Applications

Tested applications:	ELISA, WB, IHC
Cited applications:	IF, WB
Species specificity:	Human, Mouse, Rat; other species not tested.
Cited species:	Human
Calculated Syntaxin 16 MW:	37 kDa
Observed Syntaxin 16 MW:	42 kDa
Positive WB detected in	Human kidney tissue, Jurkat cells
Positive IHC detected in	Human colon cancer tissue
Recommended dilution:	WB: 1:200-1:2000 IHC: 1:20-1:200

Application key: WB = Western blotting, IHC = Immunohistochemistry, IF = Immunofluorescence, IP = Immunoprecipitation

Immunogen information

Immunogen:	Ag1657
GenBank accession number:	BC019042
Gene ID (NCBI):	8675
Full name:	Syntaxin 16

Product information

Purification method:	Antigen affinity purification
Storage:	PBS with 0.1% sodium azide and 50% glycerol pH 7.3. Store at -20°C.