

## MARCH5 Polyclonal Antibody

Catalog number: 12213-1-AP

Size: 27 µg/150 µl

Source: Rabbit

Isotype: IgG

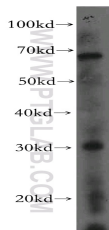
Synonyms:

MARCH5; FLJ20445, MARCH V,

MARCH5, Mitochondrial

ubiquitin ligase, MITOL, RING

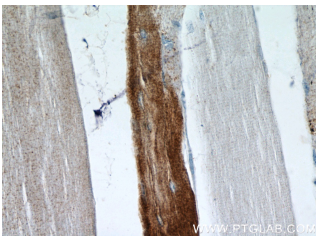
finger protein 153, RNF153



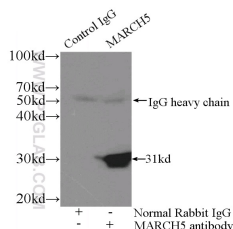
HeLa cells were subjected to SDS PAGE followed by western blot with 12213-1-AP(MARCH5 antibody) at dilution of 1:500



Immunohistochemistry of paraffin-embedded human skeletal muscle tissue slide using 12213-1-AP(MARCH5 Antibody) at dilution of 1:50 (under 10x lens)



Immunohistochemistry of paraffin-embedded human skeletal muscle tissue slide using 12213-1-AP(MARCH5 Antibody) at dilution of 1:50 (under 40x lens)



### Background

MARCH5(E3 ubiquitin-protein ligase MARCH5) is a 31 kDa protein also named as RNF153. This protein plays a protective role against mitochondrial dysfunction caused by the mitochondrial accumulation of mSOD1 via the ubiquitin-proteasome pathway(PMID:19741096). And it may regulate MAP1B LC1 function in mitochondria by controlling mitochondrial aggregation via mitochondrial LC1 levels(PMID:22308378).

### Applications

Tested applications:	ELISA, IHC, IP, WB
Species specificity:	Human; other species not tested.
Calculated MARCH5 MW:	278aa,31 kDa
Observed MARCH5 MW:	31 kDa
Positive WB detected in	HeLa cells
Positive IP detected in	HeLa cells
Positive IHC detected in	Human skeletal muscle tissue
Recommended dilution:	WB: 1:200-1:2000
	IP: 1:200-1:1000
	IHC: 1:20-1:200

Application key: WB = Western blotting, IHC = Immunohistochemistry, IF = Immunofluorescence, IP = Immunoprecipitation

### Immunogen information

Immunogen:	Ag2806
GenBank accession number:	BC015480
Gene ID (NCBI):	54708
Full name:	Membrane-associated ring finger (C3HC4) 5

### Product information

Purification method:	Antigen affinity purification
Storage:	PBS with 0.02% sodium azide and 50% glycerol pH 7.3. Store at -20°C.

**IP Result of anti-MARCH5  
(IP:12213-1-AP, 3ug;  
Detection:12213-1-AP 1:300)  
with HeLa cells lysate 1800ug.**