

CPB1 Polyclonal Antibody

Catalog number: 12600-1-AP

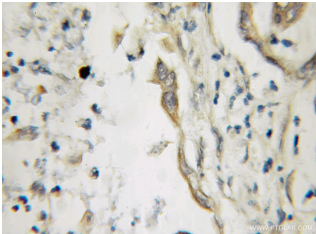
Size: 60 µg/150 µl

Source: Rabbit

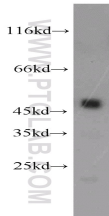
Isotype: IgG

Synonyms:

CPB1; Carboxypeptidase B,
carboxypeptidase B1 (tissue),
CPB, CPB1, DKFZp779K1333,
Pancreas specific protein, PASP,
PCPB



Immunohistochemical of paraffin-embedded human pancreas cancer using 12600-1-AP (PASP antibody) at dilution of 1:50 (under 40x lens)



mouse pancreas tissue were subjected to SDS PAGE followed by western blot with 12600-1-AP (PASP antibody) at dilution of 1:1000

Background

PASP (pancreas-specific protein) is also named as CPB1, CPB, PCPB and belongs to the peptidase M14 family. This protein modulates the plasminogen system both in the matrix and on the cell surface, thus leading to the inhibition of endothelial cell movement and tube formation. It is initially described as a pancreatic metallo-carboxypeptidase and is a marker for acute pancreatitis (PMID:19717511). The deduced 416-amino acid proenzyme has a 15-amino acid signal peptide and a 95-amino acid activation peptide.

Applications

Tested applications:	ELISA, WB, IHC
Species specificity:	Human, Mouse, Rat; other species not tested.
Calculated CPB1 MW:	417aa, 47 kDa
Observed CPB1 MW:	47 kDa
Positive WB detected in	Mouse pancreas tissue, rat pancreas tissue
Positive IHC detected in	Human pancreas cancer tissue, human kidney tissue, human pancreas tissue
Recommended dilution:	WB: 1:500-1:5000 IHC: 1:20-1:200

Application key: WB = Western blotting, IHC = Immunohistochemistry, IF = Immunofluorescence, IP = Immunoprecipitation

Immunogen information

Immunogen:	Ag3243
GenBank accession number:	BC015338
Gene ID (NCBI):	1360
Full name:	Carboxypeptidase B1 (tissue)

Product information

Purification method:	Antigen affinity purification
Storage:	PBS with 0.1% sodium azide and 50% glycerol pH 7.3. Store at -20°C.