

LSS Polyclonal Antibody

Catalog number: 13715-1-AP

Size: 20 µg/150 µl

Source: Rabbit

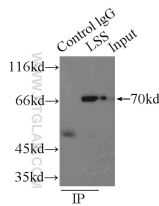
Isotype: IgG

Synonyms:

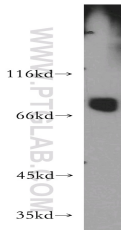
LSS; FLJ25486, FLJ35015,

FLJ39450, FLJ46393, hOSC,

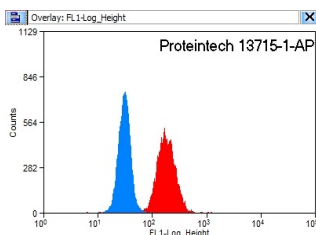
Lanosterol synthase, LSS, OSC



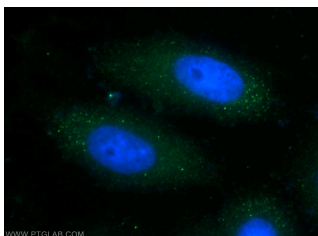
IP Result of anti-LSS (IP:13715-1-AP, 3µg; Detection:13715-1-AP 1:500) with HepG2 cells lysate 2900µg.



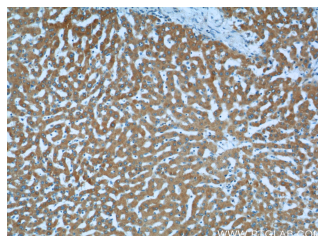
mouse testis tissue were subjected to SDS PAGE followed by western blot with 13715-1-AP(LSS antibody) at dilution of 1:400



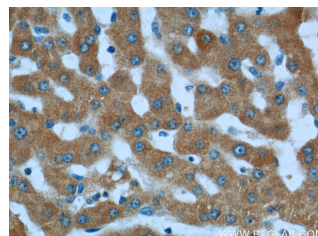
1X10⁶ HeLa cells were stained with 0.2µg LSS antibody (13715-1-AP, red) and control antibody (blue). Fixed with 90% MeOH blocked with 3% BSA (30 min). Alexa Fluor 488-conjugated AffiniPure Goat Anti-Rabbit IgG(H+L) with dilution 1:1500.



Immunofluorescent analysis



Immunohistochemistry of



Immunohistochemistry of

Background

LSS, also named as OSC, is lanosterol synthase which catalyzes the cyclization of (S)-2,3 oxidosqualene to lanosterol, a reaction that forms the sterol nucleus. LSS gene has three isoforms with MW 74 kDa and 82-85 kDa. This antibody can recognize all these three isoforms.

Applications

Tested applications:

ELISA, WB, IP, IHC, IF, FC

Cited applications:

WB

Species specificity:

Human, Mouse, Rat; other species not tested.

Cited species:

Rat

Calculated LSS MW:

732aa, 83 kDa

Observed LSS MW:

70-75 kDa

Positive WB detected in

Mouse testis tissue, HeLa cells, HepG2 cells, human brain tissue, mouse liver tissue, mouse pancreas tissue, PC-3 cells

Positive IP detected in

HepG2 cells

Positive IHC detected in

Human liver tissue, mouse testis tissue

Positive IF detected in

HepG2 cells

Positive FC detected in

HeLa cells

Recommended dilution:

WB: 1:500-1:5000

IP: 1:200-1:2000

IHC: 1:20-1:200

IF: 1:20-1:200

FC: N/A

Application key: WB = Western blotting, IHC = Immunohistochemistry, IF = Immunofluorescence, IP = Immunoprecipitation

Immunogen information

Immunogen:

Ag4655

GenBank accession number:

BC035638

Gene ID (NCBI):

4047

Full name:

Lanosterol synthase (2,3-oxidosqualene-lanosterol cyclase)

Product information

Purification method:

Antigen affinity purification

Storage:

PBS with 0.02% sodium azide and 50% glycerol pH 7.3. Store at -20°C.

of HepG2 cells using 13715-1-AP(LSS Antibody) at dilution of 1:50 and Alexa Fluor 488-conjugated AffiniPure Goat Anti-Rabbit IgG(H+L)

paraffin-embedded human liver tissue slide using 13715-1-AP(LSS Antibody) at dilution of 1:50 (under 10x lens)

paraffin-embedded human liver tissue slide using 13715-1-AP(LSS Antibody) at dilution of 1:50 (under 40x lens)