

RAB32 Polyclonal Antibody

Catalog number: 10999-1-AP

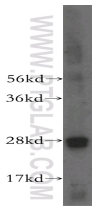
Size: 28 µg/150 µl

Source: Rabbit

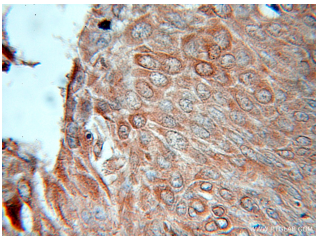
Isotype: IgG

Synonyms:

RAB32;



human colon tissue were subjected to SDS PAGE followed by western blot with 10999-1-AP(RAB32 Antibody) at dilution of 1:500



Immunohistochemistry of paraffin-embedded human lung cancer using 10999-1-AP(RAB32 Antibody) at Dilution 1:50 (under 10x lens)

Applications

Tested applications:	ELISA, WB, IHC
Species specificity:	Human; other species not tested.
Positive WB detected in:	Human colon tissue
Calculated RAB32 MW:	25kd
Observed RAB32 MW:	28kd
Positive IHC detected in:	Human lung cancer
Recommended dilution:	WB: 1:200-1:2000 IHC: 1:20-1:200

Application key: WB = Western blotting, IHC = Immunohistochemistry, IF = Immunofluorescence, IP = Immunoprecipitation, FC = Flow cytometry

Immunogen information

Immunogen:	Ag1450
GenBank accession number:	BC015061
Gene ID (NCBI):	10981
Full name:	RAB32, member RAS oncogene family

Product information

Purification method:	Antigen affinity purification
Storage:	PBS with 0.1% sodium azide and 50% glycerol pH 7.3. Store at -20°C.