

FLCN Polyclonal Antibody

Catalog number: 11236-2-AP

Size: 47 µg/150 µl

Source: Rabbit

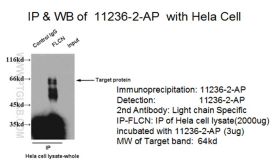
Isotype: IgG

Synonyms:

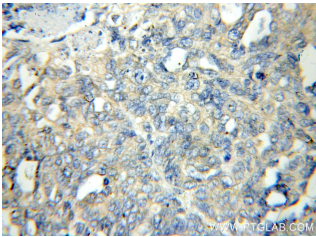
FLCN; BHD, DKFZp547A118,

FLCL, FLCN, FLJ45004, FLJ99377,

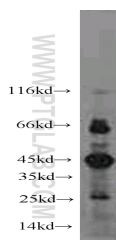
folliculin



IP result of anti-FLCN(11236-2-AP) with HeLa cell.



Immunohistochemical of paraffin-embedded human ovary tumor using 11236-2-AP(FLCN antibody) at dilution of 1:50 (under 40x lens)



mouse thymus tissue were subjected to SDS PAGE followed by western blot with 11236-2-AP(FLCN antibody) at dilution of 1:300

Background

FLCN, also named as BHD, belongs to the folliculin family. It may play a role in the pathogenesis of an uncommon form of kidney cancer through its association with an inherited disorder of the hair follicle (fibrofolliculomas). FLCN may be a tumor suppressor. It is involved in colorectal tumorigenesis. It may be involved in energy and/or nutrient sensing through the AMPK and mTOR signaling pathways. Mutation of FLCN may cause the BHD(Birt-Hogg-Dube syndrome) or (PSP) primary spontaneous pneumothorax. And it may be involved in renal cell carcinoma. This antibody can recognize all the 3 isoforms of FLCN.

Applications

Tested applications:	ELISA, WB, IHC, IP
Cited applications:	WB
Species specificity:	Human,Mouse,Rat; other species not tested.
Cited species:	Human, mouse
Calculated FLCN MW:	38 kDa
Observed FLCN MW:	38-45kd,64kd,20-26kd
Positive WB detected in	Mouse thymus tissue, A549 cells, HeLa cells, mouse kidney tissue
Positive IP detected in	HeLa cells
Positive IHC detected in	Human ovary tumor tissue
Recommended dilution:	WB: 1:200-1:1000 IP: 1:200-1:1000 IHC: 1:20-1:200

Application key: WB = Western blotting, IHC = Immunohistochemistry, IF = Immunofluorescence, IP = Immunoprecipitation

Immunogen information

Immunogen:	Ag1746
GenBank accession number:	BC015687
Gene ID (NCBI):	201163
Full name:	Folliculin

Product information

Purification method:	Antigen affinity purification
Storage:	PBS with 0.1% sodium azide and 50% glycerol pH 7.3. Store at -20°C.