

PSTPIP2 Polyclonal Antibody

Catalog number: 13450-1-AP

Size: 20 µg/150 µl

Source: Rabbit

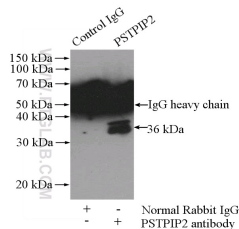
Isotype: IgG

Synonyms:

PSTPIP2; MAYP, PSTPIP2



Raji cells were subjected to SDS PAGE followed by western blot with 13450-1-AP (PSTPIP2 antibody) at dilution of 1:500



IP Result of anti-PSTPIP2 (IP:13450-1-AP, 4µg; Detection:13450-1-AP 1:500) with Raji cells lysate 2000µg.

Applications

Tested applications:	ELISA, WB, IP
Species specificity:	Human, Mouse, Rat; other species not tested.
Calculated PSTPIP2 MW:	312aa, 36 kDa
Observed PSTPIP2 MW:	36 kDa
Positive WB detected in	Raji cells
Positive IP detected in	Raji cells
Recommended dilution:	WB: 1:200-1:2000 IP: 1:200-1:2000

Application key: WB = Western blotting, IHC = Immunohistochemistry, IF = Immunofluorescence, IP = Immunoprecipitation

Immunogen information

Immunogen:	Ag4293
GenBank accession number:	BC035395
Gene ID (NCBI):	9050
Full name:	Proline-serine-threonine phosphatase interacting protein 2

Product information

Purification method:	Antigen affinity purification
Storage:	PBS with 0.02% sodium azide and 50% glycerol pH 7.3. Store at -20°C.