

ARHGDIG Polyclonal Antibody

Catalog number: 14282-1-AP

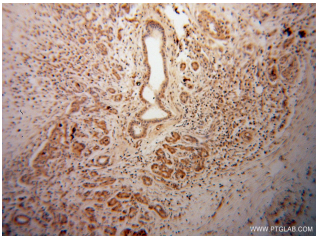
Size: 24 µg/150 µl

Source: Rabbit

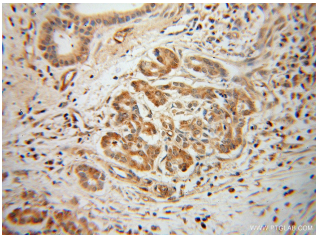
Isotype: IgG

Synonyms:

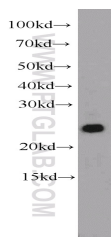
ARHGDIG; ARHGDIG, Rho GDI 3, Rho GDI gamma, RHOGDI 3



Immunohistochemical of paraffin-embedded human pancreas cancer using 14282-1-AP (ARHGDIG antibody) at dilution of 1:100 (under 10x lens)



Immunohistochemical of paraffin-embedded human pancreas cancer using 14282-1-AP (ARHGDIG antibody) at dilution of 1:100 (under 40x lens)



HeLa cells were subjected to SDS PAGE followed by western blot with 14282-1-AP (ARHGDIG antibody) at dilution of 1:1000

Applications

Tested applications:	ELISA, WB, IHC
Species specificity:	Human, Mouse, Rat; other species not tested.
Calculated ARHGDIG MW:	25kd
Observed ARHGDIG MW:	25 kDa
Positive WB detected in	HeLa cells, HEK-293 cells, human brain tissue, MCF-7 cells
Positive IHC detected in	Human pancreas cancer tissue
Recommended dilution:	WB: 1:500-1:5000 IHC: 1:20-1:200

Application key: WB = Western blotting, IHC = Immunohistochemistry, IF = Immunofluorescence, IP = Immunoprecipitation

Immunogen information

Immunogen:	Ag5554
GenBank accession number:	BC047699
Gene ID (NCBI):	398
Full name:	Rho GDP dissociation inhibitor (GDI) gamma

Product information

Purification method:	Antigen affinity purification
Storage:	PBS with 0.02% sodium azide and 50% glycerol pH 7.3. Store at -20°C.