

LSM8 Polyclonal Antibody

Catalog number: 10134-1-AP

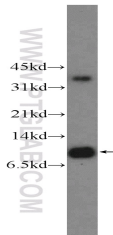
Size: 45 µg/150 µl

Source: Rabbit

Isotype: IgG

Synonyms:

LSM8; LSM8, NAA38, YJR022W



HeLa cells were subjected to SDS PAGE followed by western blot with 10134-1-AP (LSM8 Antibody) at dilution of 1:300

Background

Sm-like proteins were identified in a variety of organisms based on sequence homology with the Sm protein family. Sm-like proteins contain the Sm sequence motif, which consists of 2 regions separated by a linker of variable length that folds as a loop. The Sm-like proteins are thought to form a stable heteromer present in tri-snRNP particles, which are important for pre-mRNA splicing [PMID:15075370]. Lsm2–Lsm8 (Lsm stands for Like Sm), binds and stabilizes the 3' end of the spliceosomal U6 snRNA. Lsm proteins facilitate the annealing of U6 snRNA with U4 snRNA in vitro and interact with the U4/U6 annealing factor Prp24, suggesting that Lsm proteins function in U4/U6 snRNP formation in vivo [PMID:15485930, 17251193].

Applications

Tested applications:	ELISA, WB
Species specificity:	Human, Mouse, Rat; other species not tested.
Calculated LSM8 MW:	14 kDa / 75 kDa
Observed LSM8 MW:	11 kDa
Positive WB detected in:	HeLa cells, HL-60 cells
Recommended dilution:	WB: 1:200-1:1000

Application key: WB = Western blotting, IHC = Immunohistochemistry, IF = Immunofluorescence, IP = Immunoprecipitation

Immunogen information

Immunogen:	Ag0178
GenBank accession number:	BC002742
Gene ID (NCBI):	51691
Full name:	LSM8 homolog, U6 small nuclear RNA associated (S. cerevisiae)

Product information

Purification method:	Antigen affinity purification
Storage:	PBS with 0.1% sodium azide and 50% glycerol pH 7.3. Store at -20°C.