

PKD2L1 Polyclonal Antibody

Catalog number: 13117-2-AP

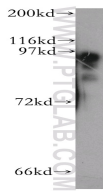
Size: 33 µg/150 µl

Source: Rabbit

Isotype: IgG

Synonyms:

PKD2L1; PCL; PKD2L; PKDL



human liver tissue were subjected to SDS PAGE followed by western blot with 13117-2-AP(PKD2L1 Antibody) at dilution of 1:800

Applications

Tested applications:	ELISA, WB
Species specificity:	Human, mouse, rat; other species not tested.
Positive WB detected in:	Human liver tissue
Calculated PKD2L1 MW:	805aa,92kd
Observed PKD2L1 MW:	92kd
Recommended dilution:	WB: 1:200-1:2000

Application key: WB = Western blotting, IHC = Immunohistochemistry, IF = Immunofluorescence, IP = Immunoprecipitation, FC = Flow cytometry

Immunogen information

Immunogen:	Ag3807
GenBank accession number:	BC025665
Gene ID (NCBI):	9033
Full name:	Polycystic kidney disease 2-like 1

Product information

Purification method:	Antigen affinity purification
Storage:	PBS with 0.02% sodium azide and 50% glycerol pH 7.3. Store at -20°C.