

RNH1 Polyclonal Antibody

Catalog number: 10345-1-AP

Size: 20 µg/150 µl

Source: Rabbit

Isotype: IgG

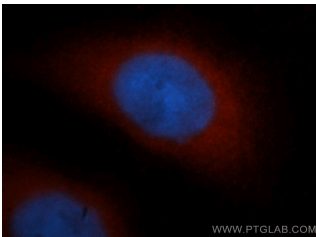
Synonyms:

RNH1; Placental RNase

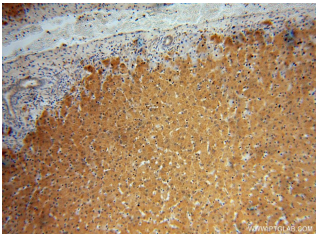
inhibitor, PRI, RAI,

Ribonuclease inhibitor, RNH,

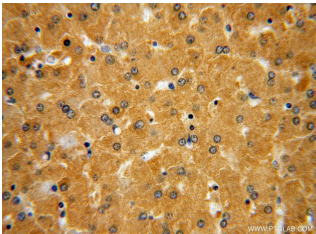
RNH1



Immunofluorescent analysis of MCF-7 cells, using RNH1 antibody 10345-1-AP at 1:50 dilution and Rhodamine-labeled goat anti-rabbit IgG (red). Blue pseudocolor = DAPI (fluorescent DNA dye).



Immunohistochemical of paraffin-embedded human liver using 10345-1-AP (RNH1 antibody) at dilution of 1:50 (under 10x lens)



Immunohistochemical of paraffin-embedded human liver using 10345-1-AP (RNH1 antibody) at dilution of 1:50 (under 40x lens)

Background

Ribonuclease/ angiogenin inhibitor (RNH, synonyms: RAI, MGC4569, MGC18200, MGC54054) is a protein that binds tightly to ribonucleases in cells and may be essential in the control of mRNA degradation and gene expression. The human RNH gene has been regionally localized to chromosome band 11p15 by in situ hybridization.

Applications

Tested applications:	ELISA, WB, IHC, IF, FC, IP
Cited applications:	IF, IHC, WB
Species specificity:	Human, Mouse, Rat; other species not tested.
Cited species:	Human, mouse
Calculated RNH1 MW:	50 kDa
Observed RNH1 MW:	45-50 kDa
Positive WB detected in	L02 cells, human brain tissue, human heart tissue, human liver tissue, mouse liver tissue
Positive IP detected in	Mouse liver tissue
Positive IHC detected in	Human liver tissue, human ovary tumor tissue
Positive IF detected in	MCF-7 cells
Positive FC detected in	MCF-7 cells
Recommended dilution:	WB: 1:500-1:5000 IP: 1:200-1:2000 IHC: 1:20-1:200 IF: 1:20-1:200 FC: N/A

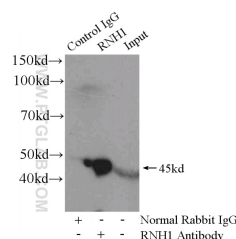
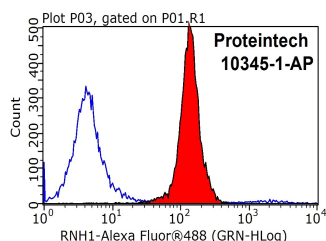
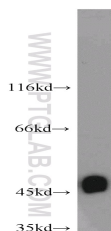
Application key: WB = Western blotting, IHC = Immunohistochemistry, IF = Immunofluorescence, IP = Immunoprecipitation

Immunogen information

Immunogen:	Ag0350
GenBank accession number:	BC000677
Gene ID (NCBI):	6050
Full name:	Ribonuclease/angiogenin inhibitor 1

Product information

Purification method:	Antigen affinity purification
Storage:	PBS with 0.1% sodium azide and 50% glycerol pH 7.3. Store at -20°C.



L02 cells were subjected to SDS PAGE followed by western blot with 10345-1-AP(RNH1 antibody) at dilution of 1:2000

1X10⁶ MCF-7 cells were stained with 0.2ug RNH1 antibody (10345-1-AP, red) and control antibody (blue). Fixed with 90% MeOH blocked with 3% BSA (30 min). Alexa Fluor 488-conjugated AffiniPure Goat Anti-Rabbit IgG(H+L) with dilution 1:1000.

IP Result of anti-RNH1 (IP:10345-1-AP, 4ug; Detection:10345-1-AP 1:500) with mouse liver tissue lysate 6400ug.