

## PPP3R2 Polyclonal Antibody

Catalog number: 14005-1-AP

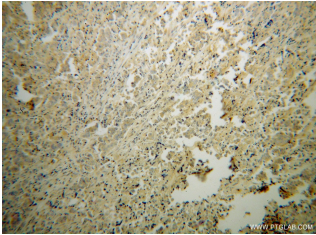
Size: 37 µg/150 µl

Source: Rabbit

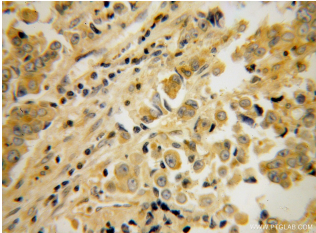
Isotype: IgG

Synonyms:

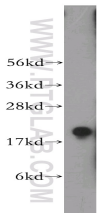
PPP3R2; PPP3R2, Calcineurin B like protein, PPP3RL, CBLP, Calcineurin BII



Immunohistochemical of paraffin-embedded human prostate cancer using 14005-1-AP (PPP3R2 antibody) at dilution of 1:50 (under 10x lens)



Immunohistochemical of paraffin-embedded human prostate cancer using 14005-1-AP (PPP3R2 antibody) at dilution of 1:50 (under 40x lens)



mouse testis tissue were subjected to SDS PAGE followed by western blot with 14005-1-AP (PPP3R2 antibody) at dilution of 1:500

### Applications

Tested applications:	ELISA, WB, IHC
Species specificity:	Human, mouse, rat; other species not tested.
Calculated PPP3R2 MW:	20 kDa
Observed PPP3R2 MW:	20kd
Positive WB detected in	Mouse testis tissue
Positive IHC detected in	Human prostate cancer
Recommended dilution:	WB: 1:200-1:2000 IHC: 1:20-1:200

Application key: WB = Western blotting, IHC = Immunohistochemistry, IF = Immunofluorescence, IP = Immunoprecipitation

### Immunogen information

Immunogen:	Ag5097
GenBank accession number:	BC030595
Gene ID (NCBI):	5535
Full name:	Protein phosphatase 3 (formerly 2B), regulatory subunit B, beta isoform

### Product information

Purification method:	Antigen affinity purification
Storage:	PBS with 0.02% sodium azide and 50% glycerol pH 7.3. Store at -20°C.