

## ARHGEF1 Polyclonal Antibody

Catalog number: 11363-1-AP

Size: 45 µg/150 µl

Source: Rabbit

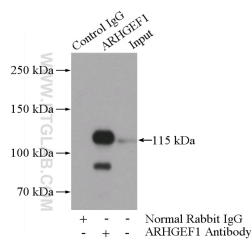
Isotype: IgG

Synonyms:

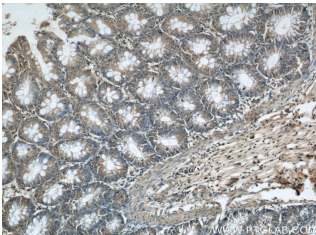
ARHGEF1; ARHGEF1, GEF1,

LBCL2, LSC, P115 RHOGEF,

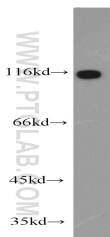
p115RhoGEF, SUB1.5



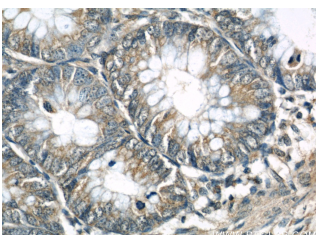
IP Result of anti-ARHGEF1 (IP:11363-1-AP, 4µg; Detection:11363-1-AP 1:1000) with HEK-293 cells lysate 2800µg.



Immunohistochemical of paraffin-embedded human colon using 11363-1-AP (ARHGEF1 antibody) at dilution of 1:50 (under 10x lens)



HEK-293 cells were subjected to SDS PAGE followed by western blot with 11363-1-AP (ARHGEF1 antibody) at dilution of 1:1000



Immunohistochemical of paraffin-embedded human

### Applications

Tested applications:	ELISA, IHC, WB, IP
Cited applications:	WB
Species specificity:	Human, Mouse; other species not tested.
Cited species:	Human
Calculated ARHGEF1 MW:	912aa, 102 kDa
Observed ARHGEF1 MW:	102-110 kDa
Positive WB detected in	HEK-293 cells, HeLa cells, human brain tissue, human spleen tissue, Jurkat cells, K-562 cells, mouse spleen tissue
Positive IP detected in	HEK-293 cells
Positive IHC detected in	Human colon tissue
Recommended dilution:	WB: 1:500-1:5000 IP: 1:500-1:5000 IHC: 1:20-1:200

Application key: WB = Western blotting, IHC = Immunohistochemistry, IF = Immunofluorescence, IP = Immunoprecipitation

### Immunogen information

Immunogen:	Ag1905
GenBank accession number:	BC011726
Gene ID (NCBI):	9138
Full name:	Rho guanine nucleotide exchange factor (GEF) 1

### Product information

Purification method:	Antigen affinity purification
Storage:	PBS with 0.1% sodium azide and 50% glycerol pH 7.3. Store at -20°C.

colon using 11363-1-  
AP (ARHGEF1 antibody) at  
dilution of 1:50 (under 40x  
lens)