

## CEBPE Polyclonal Antibody

Catalog number: 14271-1-AP

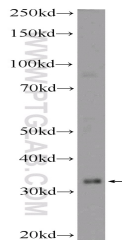
Size: 34 µg/150 µl

Source: Rabbit

Isotype: IgG

Synonyms:

CEBPE; C/EBP epsilon, CEBPE,  
CRP1



mouse liver tissue were subjected to SDS PAGE followed by western blot with 14271-1-AP( CEBPE Antibody) at dilution of 1:300

### Applications

Tested applications:	ELISA, WB
Species specificity:	Human,Mouse,Rat; other species not tested.
Calculated CEBPE MW:	31 kDa
Observed CEBPE MW:	32 kDa
Positive WB detected in	Mouse liver tissue, U-937 cells
Recommended dilution:	WB: 1:200-1:1000

Application key: WB = Western blotting, IHC = Immunohistochemistry, IF = Immunofluorescence, IP = Immunoprecipitation

### Immunogen information

Immunogen:	Ag5589
GenBank accession number:	BC035797
Gene ID (NCBI):	1053
Full name:	CCAAT/enhancer binding protein (C/EBP), epsilon

### Product information

Purification method:	Antigen affinity purification
Storage:	PBS with 0.1% sodium azide and 50% glycerol pH 7.3. Store at -20°C.