

PSMB4 Polyclonal Antibody

Catalog number: 11029-1-AP

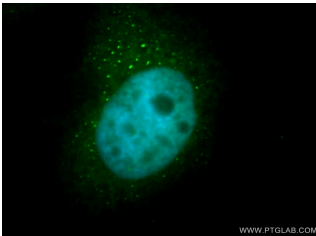
Size: 40 µg/150 µl

Source: Rabbit

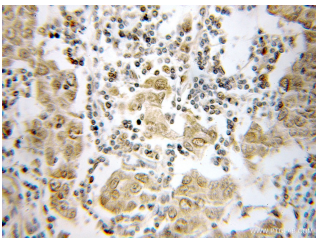
Isotype: IgG

Synonyms:

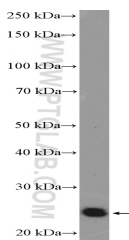
PSMB4; 20S proteasome, 26 kDa prosomal protein, HN3, HsBPROS26, HsN3, Macropain beta chain, PROS 26, PROS26, Proteasome beta chain, Proteasome chain 3, Proteasome subunit beta type 4, PSMB4



Immunofluorescent analysis of MCF-7 cells, using PSMB4 antibody 11029-1-AP at 1:50 dilution and FITC-labeled donkey anti-rabbit IgG (green). Blue pseudocolor = DAPI (fluorescent DNA dye).



Immunohistochemical of paraffin-embedded human breast cancer using 11029-1-AP (PSMB4 antibody) at dilution of 1:50 (under 10x lens)



HEK-293 cells were subjected to SDS PAGE followed by western blot with 11029-1-AP (PSMB4 Antibody) at dilution of 1:600

Background

PSMB4 (Proteasome subunit beta type-4) is also named as PROS26 and belongs to the peptidase T1B family. The proteasome is a multicatalytic proteinase complex which is characterized by its ability to cleave peptides with Arg, Phe, Tyr, Leu, and Glu adjacent to the leaving group at neutral or slightly basic pH. The human protein PSMB4 is known mainly as an interaction partner for several proteins, suggesting an important function of binding not only to the lid, but also to the 20 S core of the proteasome. PSMB4 might be a major site for proteasome regulation, where signals from the outside might be transduced to the protease activities inside (PMID:15660529). The full length 30 kDa protein has a propeptide of 45 amino acid.

Applications

Tested applications:	ELISA, IHC, IF, WB
Cited applications:	WB
Species specificity:	Human; other species not tested.
Cited species:	Human
Calculated PSMB4 MW:	29 kDa
Observed PSMB4 MW:	25 kDa
Positive WB detected in	HEK-293 cells, HeLa cells, human placenta tissue, human skeletal muscle tissue, MCF-7 cells, mouse skeletal muscle tissue
Positive IHC detected in	Human breast cancer tissue
Positive IF detected in	MCF-7 cells, HepG2 cells
Recommended dilution:	WB: 1:200-1:2000 IHC: 1:20-1:200 IF: 1:20-1:200

Application key: WB = Western blotting, IHC = Immunohistochemistry, IF = Immunofluorescence, IP = Immunoprecipitation

Immunogen information

Immunogen:	Ag1500
GenBank accession number:	BC010088
Gene ID (NCBI):	5692
Full name:	Proteasome (prosome, macropain) subunit, beta type, 4

Product information

Purification method:	Antigen affinity purification
Storage:	PBS with 0.1% sodium azide and 50% glycerol pH 7.3. Store at -20°C.